

LOC I-ASG 110.9	APP CRS 183°	Rwy Idg 4939
		TDZE 1351
		Apt Elev 1353

AL-5165 (FAA)

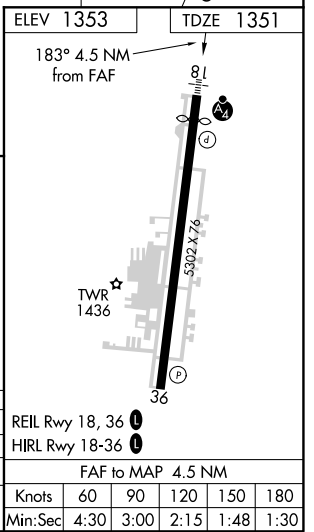
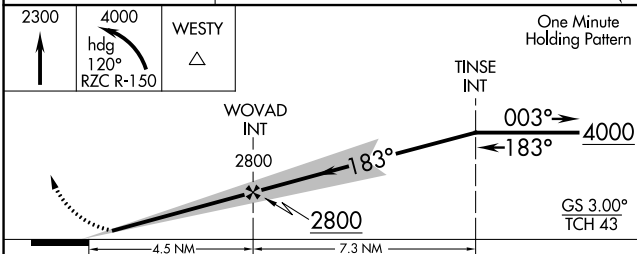
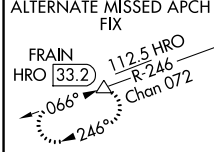
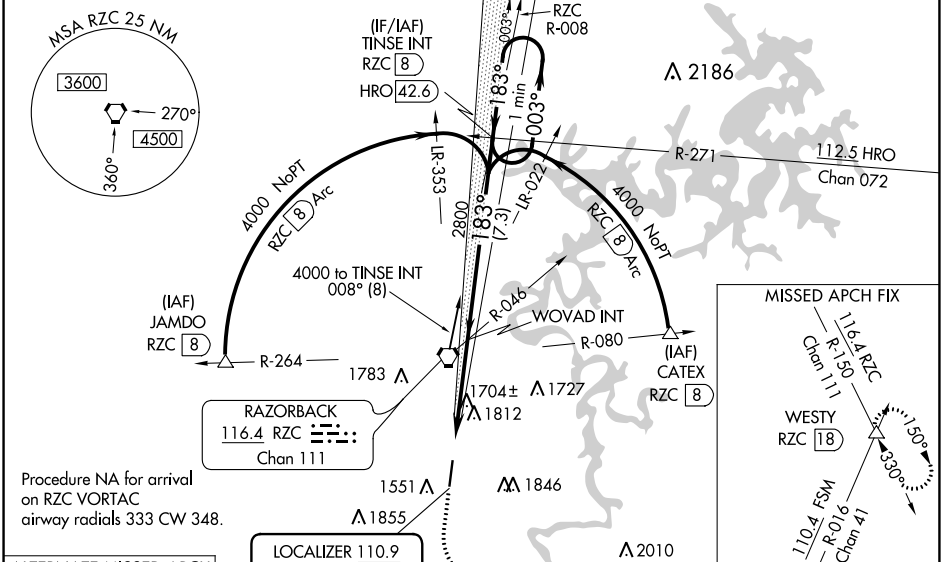
ILS or LOC RWY 18

SPRINGDALE MUNI (ASG)

MAJSAF
 Circling NA east of Rwy 18-36. Rwy 18 helicopter visibility reduction below 3/4 SM NA. Autopilot coupled approach NA below 1900. For inop ALS, increase S-ILS 18 visibility to 3/8 SM.

MISSED APPROACH: Climb to 2300 then climbing left turn to 4000 on heading 120° and RZC VORTAC R-150 to WESTY INT/RZC 18 DME and hold.

AWOS-3 124.675	RAZORBACK APP CON* 126.6 305.2	SPRINGDALE TOWER* 118.2 (CTAF) 0	GND CON 121.6	REIL 18, 36 122.8 0	UNICOM 122.95
--------------------------	--	--	-------------------------	-------------------------------	-------------------------



CATEGORY	A	B	C	D
S-ILS 18		1605-3/4	254 (300-3/4)	
S-LOC 18	1960-3/4	609 (700-3/4)	1960-1 1/2	609 (700-1 1/2)
CIRCLING	1960-1 607 (700-1)	2000-1 647 (700-1)	2020-1 3/4 667 (700-1 3/4)	2220-2 3/4 867 (900-2 3/4)

SC-1, 30 DEC 2021 to 27 JAN 2022

SC-1, 30 DEC 2021 to 27 JAN 2022