

WAAS Ch 77512 W36A	APP CRS 003°	Rwy Idg 5302 TDZE 1353 Apt Elev 1353
--	------------------------	---

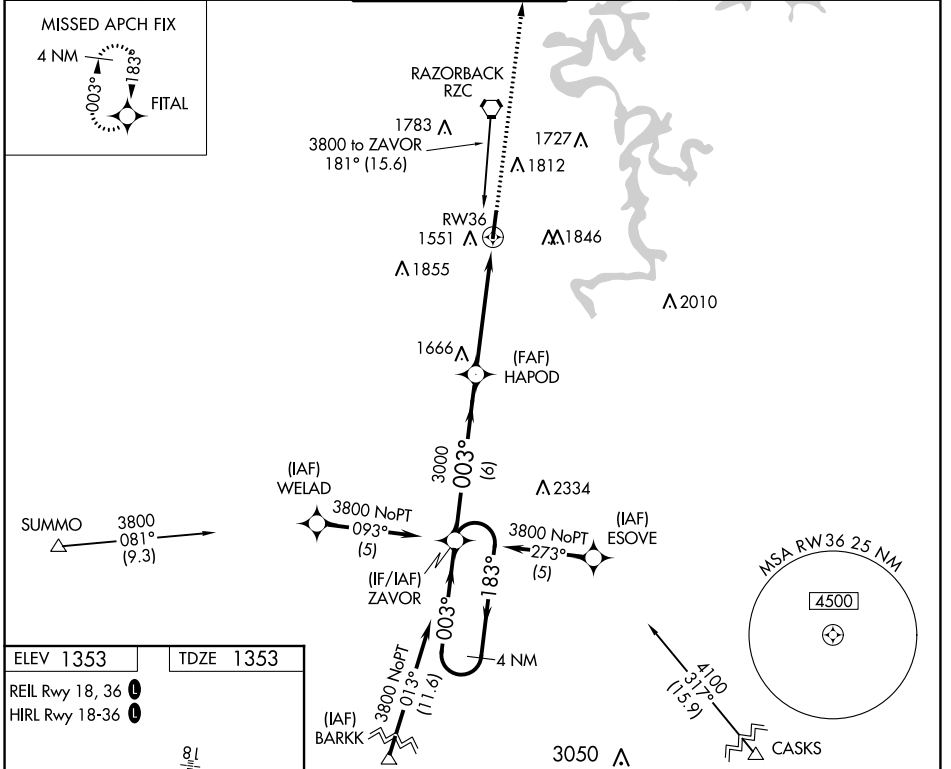
RNAV (GPS) RWY 36

SPRINGDALE MUNI (ASG)

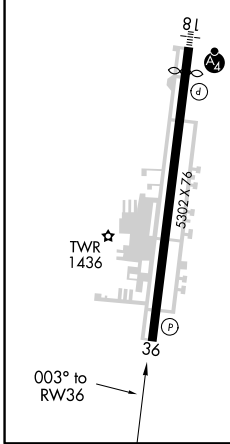
⚠ DME/DME RNP-0.3 NA. Circling NA east of Rwy 18-36. When local altimeter setting not received, use Fayetteville/Drake Fld altimeter setting and increase all DA 39 feet and all MDA 40 feet; increase visibility LNAV Cat C/D 1/8 mile and Circling Cat C/D 1/4 mile. Helicopter visibility reduction below 3/4 SM NA.

⚠ MISSED APPROACH: Climb to 3300 direct FITAL and hold.

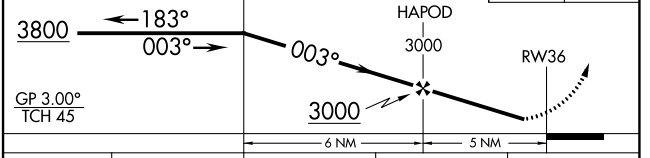
AWOS-3 124.675	RAZORBACK APP CON* 126.6 305.2	SPRINGDALE TOWER* 118.2 (CTAF) 0	GND CON 121.6	REIL 18, 36 122.8 0	UNICOM 122.95
--------------------------	--	--	-------------------------	-------------------------------	-------------------------



ELEV 1353	TDZE 1353
REIL Rwy 18, 36 0	
HIRL Rwy 18-36 0	



4 NM Holding Pattern
VGSi and RNAV glidepath not coincident (VGSi Angle 3.00/TCH 40).
3300 FITAL



CATEGORY	A	B	C	D
LPV DA	1603-1 250 (300-1)			
LNAV MDA	1960-1	607 (700-1)	1960-1 3/4	607 (700-1 3/4)
C CIRCLING	1960-1	2000-1	2020-1 3/4	2220-2 3/4
	607 (700-1)	647 (700-1)	667 (700-1 3/4)	867 (900-2 3/4)

SC-1, 30 DEC 2021 to 27 JAN 2022

SC-1, 30 DEC 2021 to 27 JAN 2022