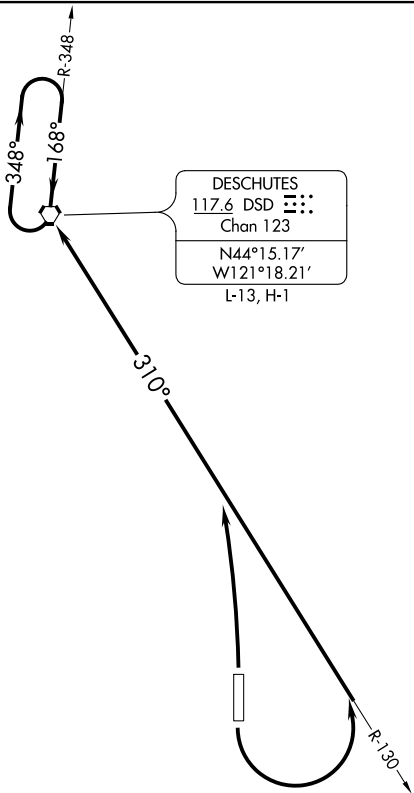


SEATTLE CENTER
126.15 269.475
CTAF
123.0



DESCHUTES
117.6 DSD
Chan 123
N44°15.17'
W121°18.21'
L-13, H-1

TAKEOFF MINIMUMS

Rwys 16, 34: Standard.

TAKEOFF OBSTACLE NOTES

- Rwy 16: Trees beginning 75' from DER, 412' left of centerline, up to 43' AGL/3572' MSL.
Trees beginning 432' from DER, 5' right of centerline, up to 37' AGL/3541' MSL.
Terrain beginning 27' from DER, 197' right of centerline, up to 3469' MSL.
Road 1' from DER, 414' left of centerline, 17' AGL/3466' MSL.
- Rwy 34: Trees beginning 306' from DER, 178' left of centerline, up to 25' AGL/3436' MSL.
Road beginning 460' from DER, 414' left of centerline, up to 17' AGL/3425' MSL.
Bush 94' from DER, 443' left of centerline, 4' AGL/3407' MSL.
Terrain beginning 1' from DER, 147' left of centerline, up to 3408' MSL.
Trees beginning 52' from DER, 252' right of centerline, up to 39' AGL/3429' MSL.

NOTE: Chart not to scale.

DEPARTURE ROUTE DESCRIPTION

TAKEOFF RUNWAY 16: Climbing left turn to intercept DSD R-130 to DSD VORTAC,
Thence

TAKEOFF RUNWAY 34: Climbing left turn to intercept the DSD R-130 to DSD VORTAC,
Thence

. . . . Climb in DSD VORTAC holding pattern to cross DSD VORTAC at or above the
MEA/MCA for the route of flight.

NW-1, 30 DEC 2021 to 27 JAN 2022

NW-1, 30 DEC 2021 to 27 JAN 2022