

APP CRS 326°	Rwy Idg TDZE Apt Elev	5201 3460 3460
------------------------	-----------------------------	---

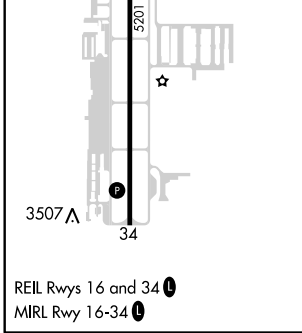
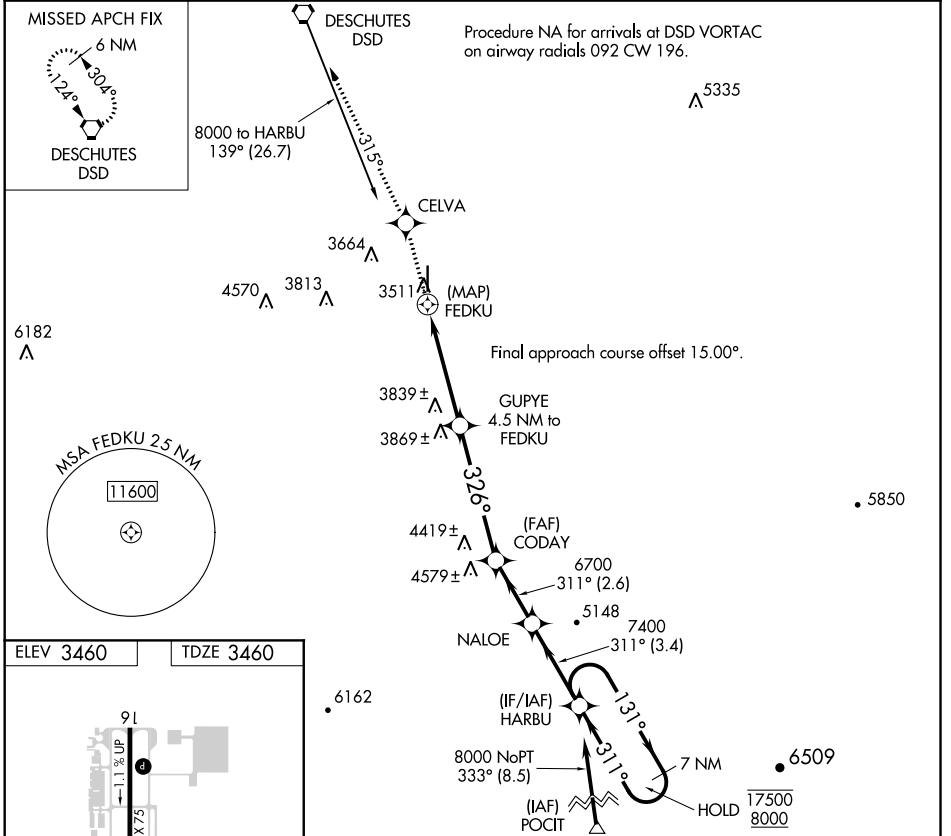
RNAV (GPS) RWY 34

BEND MUNI (BDN)

RNP APCH. MISSED APPROACH: Climb to 6000 direct CELVA and on track 315° to DSD VORTAC and hold.

NA Rwy 34 helicopter visibility reduction below 1 SM NA. Straight-in minimums NA at night. When local altimeter setting not received, use Redmond altimeter setting and increase all MDAs 80 feet, LNAV Cats C/D visibility ¼ SM and Circling Cat C/D visibility ¼ SM.

AWOS-3 134.425	SEATTLE CENTER 126.15 269.475	UNICOM 123.0 (CTAF) 0
--------------------------	---	---------------------------------



6000	CELVA	tr 315°	DSD	CODAY	NALOE	HARBU	7 NM Holding Pattern
							17500
							8000
							131°
							311°
							7400
							6700
							5100
							3.01°
							TCH 50
							326°
							4.5 NM
							5 NM
							2.6 NM
							3.4 NM
CATEGORY	A	B	C	D			
LNAV MDA	4100-1	640 (700-1)	4100-1¾	640 (700-1¾)			
CIRCLING	4100-1	640 (700-1)	4120-1¾	4640-3			
			660 (700-1¾)	1180 (1200-3)			

VGSI and descent angles not coincident (VGSI Angle 3.00/TCH 44).

NW-1, 30 DEC 2021 to 27 JAN 2022

NW-1, 30 DEC 2021 to 27 JAN 2022