

WAAS CH 81906 W16A	APP CRS 161°	Rwy Idg 5201 TDZE 3432 Apt Elev 3460
--	------------------------	---

RNAV (GPS) Z RWY 16

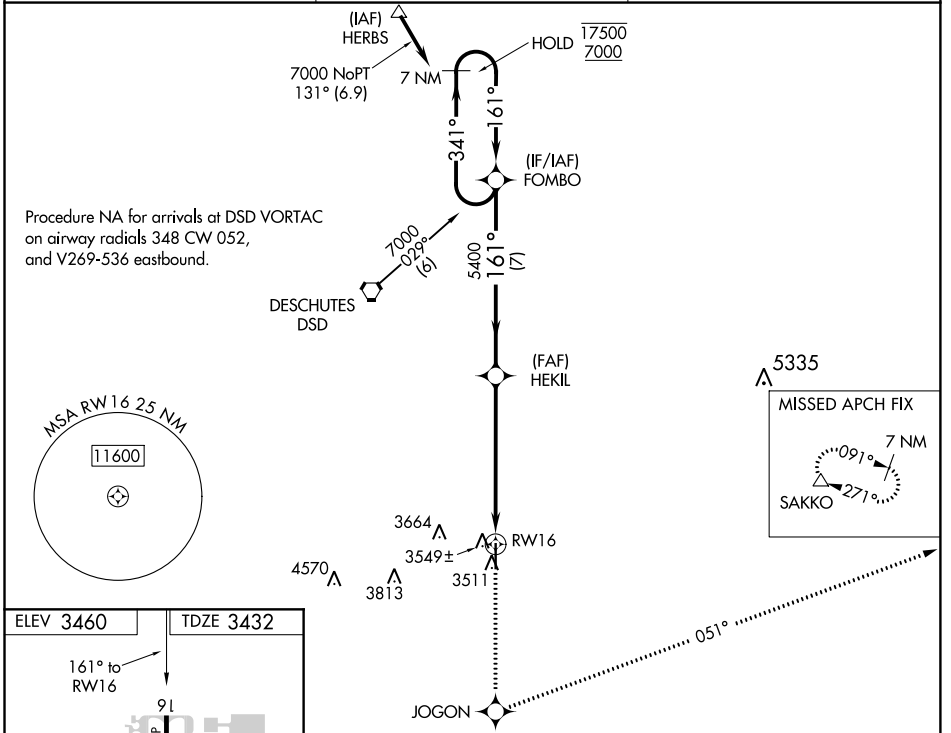
BEND MUNI (BDN)

RNP APCH.

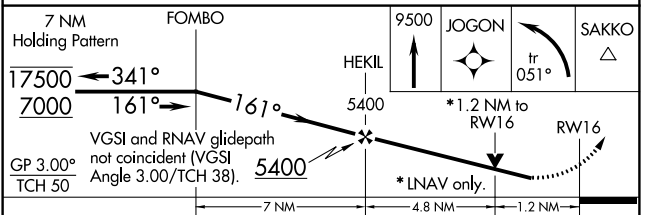
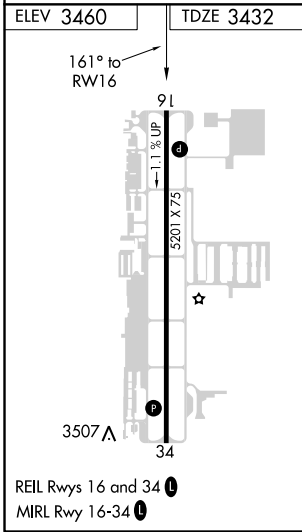
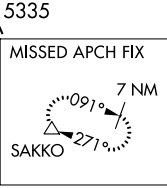
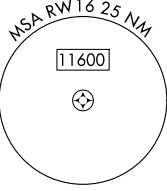
NA Rwy 16 helicopter visibility reduction below 3/4 SM NA. For uncompensated Baro-VNAV systems, procedure NA below -21°C or above 42°C. When local altimeter setting not received, use Redmond altimeter setting and increase all DA/MDAs by 80 feet, LPV visibilities 1/4 SM all Cats, LNAV/VNAV visibilities 1/4 SM all Cats, LNAV Cat D visibility 1/4 SM, and Circling Cat C visibility 1/4 SM.

MISSED APPROACH: Climb to 9500 direct JOGON and left turn on track 051° to SAKKO and hold, continue climb-in-hold to 9500.

AWOS-3 134.425	SEATTLE CENTER 126.15 269.475	UNICOM 123.0 (CTAF) 0
--------------------------	---	---------------------------------



Procedure NA for arrivals at DSD VORTAC on airway radials 348 CW 052, and V269-536 eastbound.



CATEGORY	A	B	C	D
LPV DA	3682-1		250 (300-1)	
LNAV/VNAV DA	3809-1½		377 (400-1½)	
LNAV MDA	3840-1	408 (400-1)	3840-1¼	408 (400-1¼)
C CIRCLING	3940-1 480 (500-1)	4000-1 540 (600-1)	4120-1¾ 660 (700-1¾)	4640-3 1180 (1200-3)

NW-1, 30 DEC 2021 to 27 JAN 2022

NW-1, 30 DEC 2021 to 27 JAN 2022