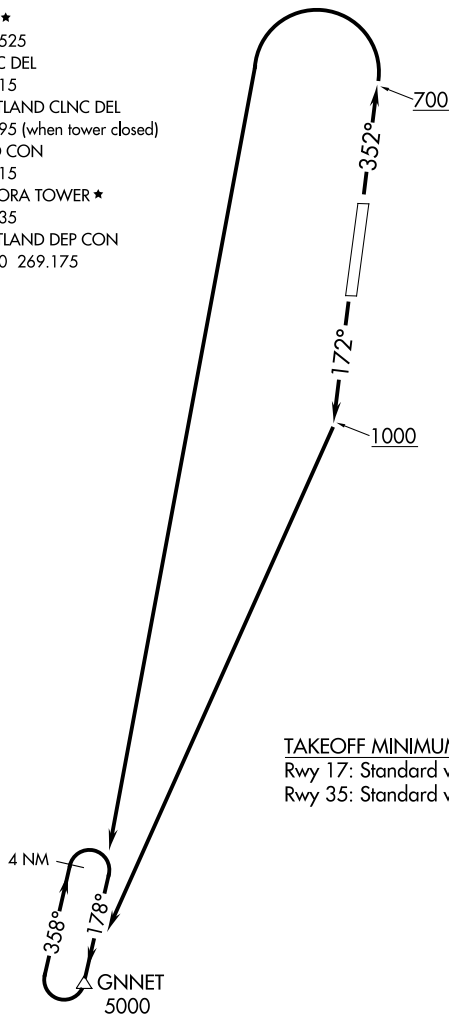


ATIS ★
118.525
CLNC DEL
119.15
PORTLAND CLNC DEL
119.95 (when tower closed)
GND CON
119.15
AURORA TOWER ★
120.35
PORTLAND DEP CON
126.0 269.175

**TOP ALTITUDE:
ASSIGNED BY ATC**

NOTE: RNAV 1
NOTE: GPS required.



TAKEOFF MINIMUMS

Rwy 17: Standard with minimum climb of 375' per NM to 1000.
Rwy 35: Standard with minimum climb of 350' per NM to 2100.

NOTE: Chart not to scale.

DEPARTURE ROUTE DESCRIPTION

TAKEOFF RUNWAY 17: Climb heading 172° to 1000, then climbing right turn direct GNNET.
Thence

TAKEOFF RUNWAY 35: Climb heading 352° to 700, then climbing left turn direct GNNET.
Thence

. . . . continue climb in GNNET holding pattern to cross GNNET at or above 5000 before proceeding on course.