

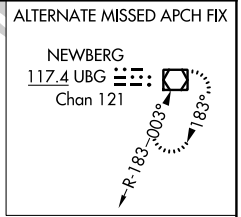
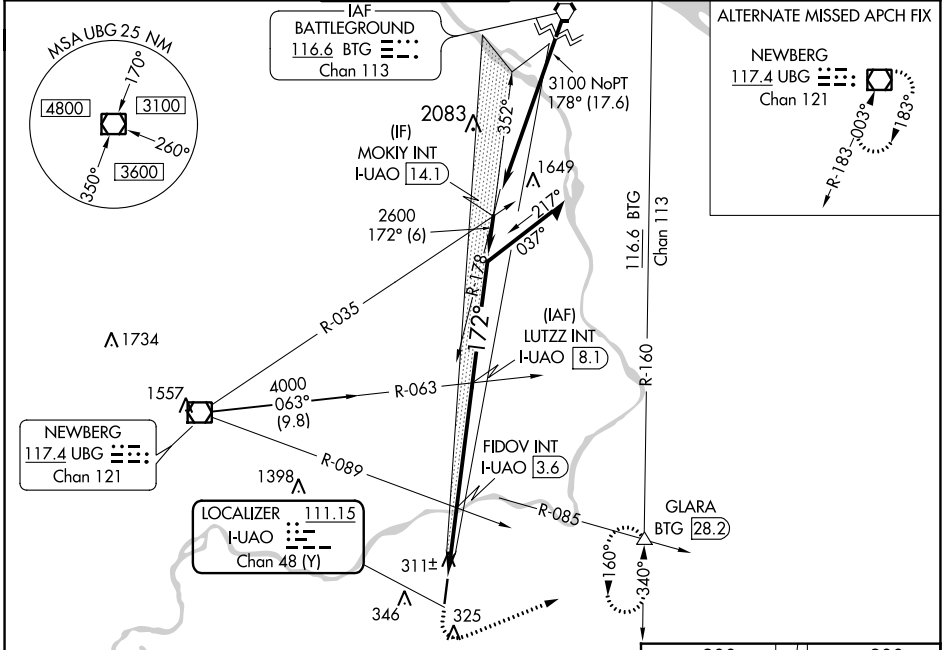
LOC/DME I-UAO <b>111.15</b> Chan <b>48</b> (Y)	APP CRS <b>172°</b>	Rwy Idg TDZE Apt Elev <b>5003</b> <b>200</b> <b>200</b>
--	------------------------	--

# LOC RWY 17

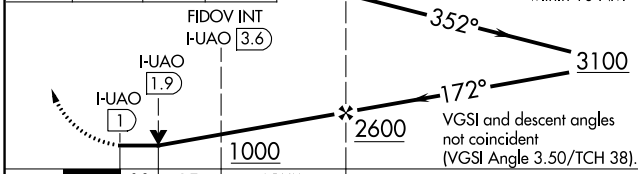
AURORA STATE (UAO)

<p>▼ Rwy 17 helicopter visibility reduction below 3/4 SM NA.</p> <p>▲ FIDOV fix minimums: Inop table does not apply to Cats C/D.</p> <p>For inop ALS, increase S-17 Cats C/D visibility to 2 1/2 SM.</p>	<p>ODALS</p>	<p>MISSED APPROACH: Climb to 900 then climbing left turn to 4000 on heading 050° and BTG R-160 to GLARA INT/BTG 28.2 DME and hold, continue climb-in-hold to 4000.</p>
--	--------------	--

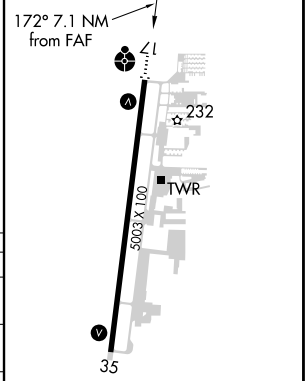
<p>ATIS ★</p> <p><b>118.525</b></p>	<p>PORTLAND APP CON</p> <p><b>126.0 269.175</b></p>	<p>AURORA TOWER ★</p> <p><b>120.35</b> (CTAF) <b>0</b></p>	<p>GND CON</p> <p><b>119.15</b></p>	<p>CLNC DEL</p> <p><b>119.15</b></p>	<p>PORTLAND CLNC DEL</p> <p><b>119.95</b> (When tower closed)</p>
-------------------------------------	---	--	-------------------------------------	--------------------------------------	---



900	4000	BTG	GLARA	LUTZ INT I-UAO [8.1]	Remain within 10 NM
↑	hdg 050°	R-160	△		



ELEV 200	TDZE 200
----------	----------



CATEGORY	A	B	C	D
S-17	1000-3/4 800 (800-3/4)	1000-1 800 (800-1)	1000-2	800 (800-2)
CIRCLING	1000-1 800 (800-1)	1000-1 1/4 800 (800-1 1/4)	1000-2 1/2	800 (800-2 1/2)
FIDOV FIX MINIMUMS				
S-17	580-3/4 380 (400-3/4)		580-1 380 (400-1)	
CIRCLING	700-1 500 (500-1)		700-1 1/2 940-2 1/4 500 (500-1 1/2) 740 (800-2 1/4)	

FAF to MAP 7.1 NM					
Knots	60	90	120	150	180
Min:Sec	7:06	4:44	3:33	2:50	2:22

NW-1, 30 DEC 2021 to 27 JAN 2022

NW-1, 30 DEC 2021 to 27 JAN 2022