

NAPLES, FLORIDA

AL-6020 (FAA)

21224

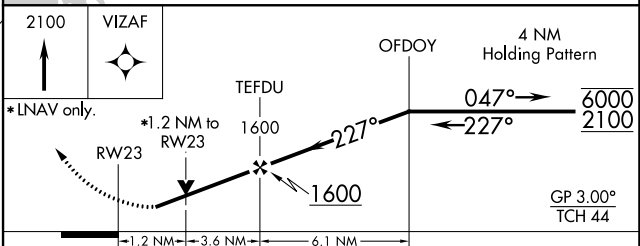
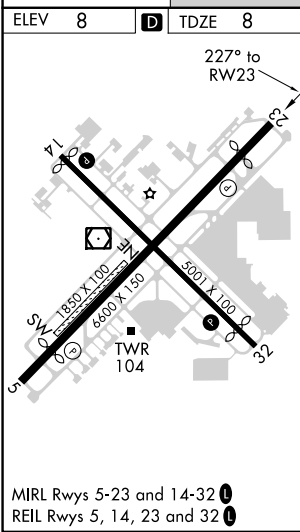
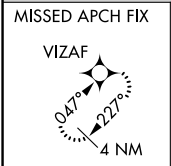
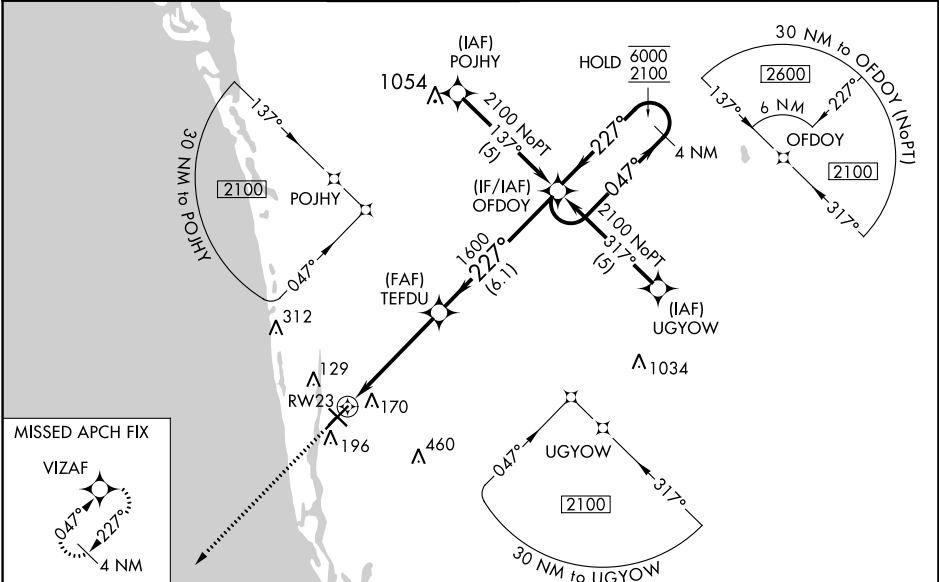
WAAS CH 69314 W23A	APP CRS 227°	Rwy ldg TDZE Apt Elev	5000 8 8
--	------------------------	-----------------------------	-------------------------------------

RNAV (GPS) RWY 23

NAPLES MUNI (APF)

RNP APCH.		MISSED APPROACH: Climb to 2100 direct VIZAF and hold.			
<p>▽ ▲ Rwy 23 helicopter visibility reduction below $\frac{3}{4}$ SM NA. For uncompensated Baro-VNAV systems, LNAV/VNAV NA below 5°C or above 54°C.</p>					

ATIS 134.225	FORT MYERS APP CON* 124.125 371.85	NAPLES TOWER* 128.5 (CTAF) 0	GND CON 121.6	CLNC DEL 118.0	CLNC DEL 124.125 (When twr closed)
------------------------	--	--	-------------------------	--------------------------	---



CATEGORY	A	B	C	D
LPV DA		313- $\frac{7}{8}$	305 (400- $\frac{7}{8}$)	
LNAV/VNAV DA		461-1 $\frac{3}{8}$	453 (500-1 $\frac{3}{8}$)	
LNAV MDA	440-1	432 (500-1)	440-1 $\frac{1}{4}$	432 (500-1 $\frac{1}{4}$)
CIRCLING	580-1	572 (600-1)	680-2 672 (700-2)	820-2 $\frac{3}{4}$ 812 (900-2 $\frac{3}{4}$)

NAPLES, FLORIDA
Amdt 1C 17JUN21

26°09'N-81°47'W

RNAV (GPS) RWY 23

SE-3, 30 DEC 2021 to 27 JAN 2022

SE-3, 30 DEC 2021 to 27 JAN 2022