

NAPLES, FLORIDA

AL-6020 (FAA)

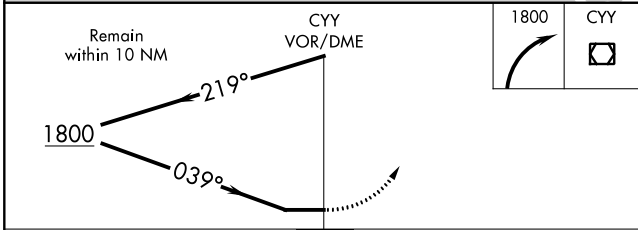
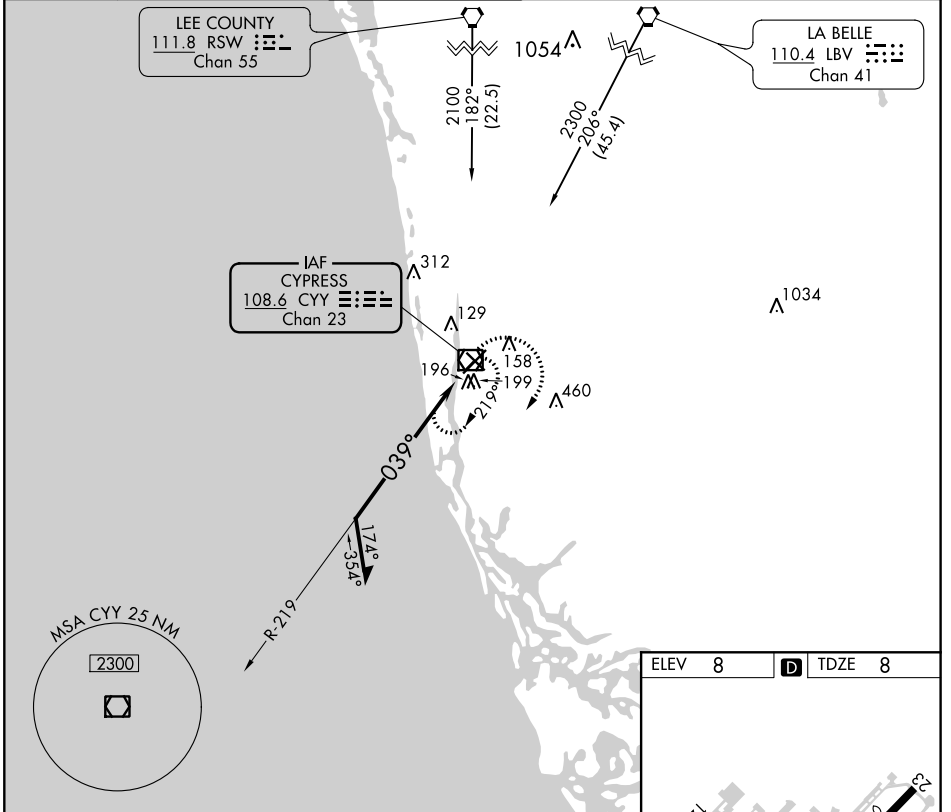
21224

VOR/DME CYY 108.6 Chan 23	APP CRS 039°	Rwy Idg TDZE Apt Elev	5000 8 8
--	------------------------	-----------------------------	-------------------------------------

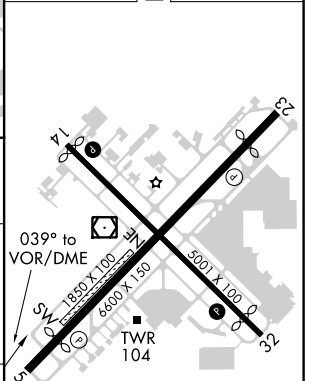
VOR RWY 5
NAPLES MUNI (APF)

MISSSED APPROACH: Climbing right turn to 1800 in CYY VOR/DME holding pattern.

ATIS 134.225	FORT MYERS APP CON* 124.125 371.85	NAPLES TOWER* 128.5 (CTAF) 0	GND CON 121.6	CLNC DEL 118.0	CLNC DEL 124.125 (When twr closed)
------------------------	--	---	-------------------------	--------------------------	---



ELEV 8	TDZE 8
--------	--------



CATEGORY	A	B	C	D
S-5	580-1	572 (600-1)	580-1½	572 (600-1½)
C CIRCLING	580-1	572 (600-1)	680-2 672 (700-2)	820-2¾ 812 (900-2¾)

MIRL Rwy 5-23 and 14-32 **0**
REIL Rwy 5, 14, 23 and 32 **0**

NAPLES, FLORIDA
Amdt 5C 25FEB21

26°09'N-81°47'W

NAPLES MUNI (APF)
VOR RWY 5

SE-3, 30 DEC 2021 to 27 JAN 2022

SE-3, 30 DEC 2021 to 27 JAN 2022