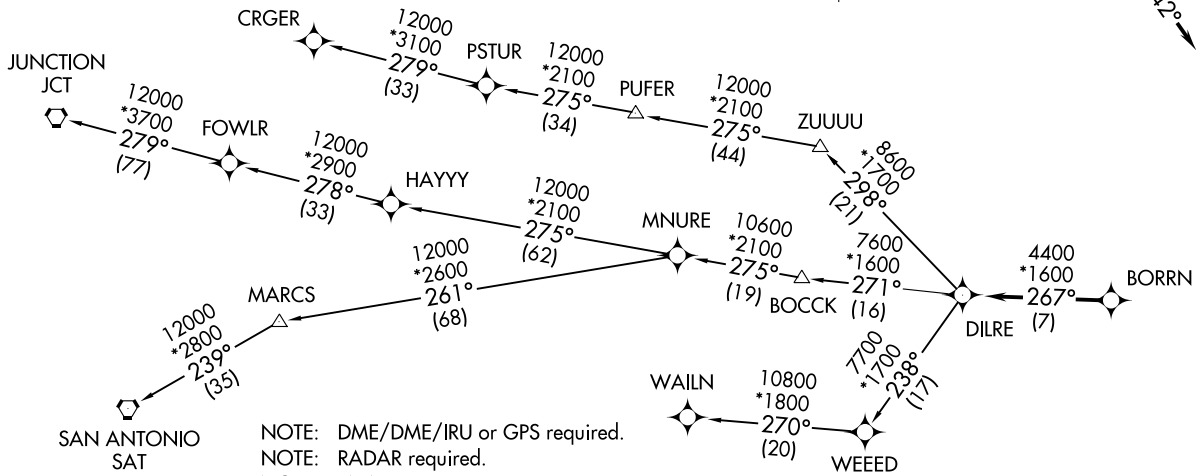
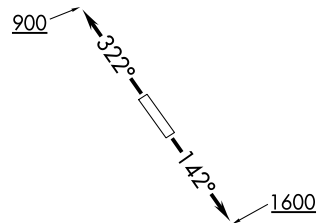


**TOP ALTITUDE:  
ASSIGNED BY ATC**

**TAKEOFF MINIMUMS:**

Rwy 14, 32: Standard with minimum climb of 500' per NM to 560.

ASOS  
118.525  
CTAF  
122.725  
CLNC DEL  
124.0  
HOUSTON DEP CON  
134.45 284.0



NOTE: DME/DME/IRU or GPS required.  
NOTE: RADAR required.  
NOTE: RNAV 1.  
NOTE: CRGER TRANSITION ATC assigned only for aircraft departing 54T, AXH, EFD, GLS, HPY, IWS, LBX, LVJ, SGR, TME, T00, T41.

(NARRATIVE ON FOLLOWING PAGE)

NOTE: Chart not to scale.

BORRN FOUR DEPARTURE (RNAV)  
(BORRN4, BORRN) 25APR19

PEARLAND RGNL (LTV1)  
HOUSTON, TEXAS

(BORRN4, BORRN) 21112  
BORRN FOUR DEPARTURE (RNAV)  
AL-6460 (FAA)

PEARLAND RGNL (LTV1)  
HOUSTON, TEXAS

# BORRN FOUR DEPARTURE (RNAV)



## DEPARTURE ROUTE DESCRIPTION

TAKEOFF RWY 14: Climb on heading 142° to 1600, for RADAR vectors to BORRN, thence. . . .

TAKEOFF RWY 32: Climb on heading 322° to 900, for RADAR vectors to BORRN, thence. . . .

. . . .on track 267° to DILRE, then on (transition). Maintain ATC assigned altitude. Expect filed altitude 10 minutes after departure.

CRGER TRANSITION (BORRN4.CRGER)

JUNCTION TRANSITION (BORRN4.JCT)

MNURE TRANSITION (BORRN4.MNURE)

SAN ANTONIO TRANSITION (BORRN4.SAT)

WAILN TRANSITION (BORRN4.WAILN)

SC-5, 30 DEC 2021 to 27 JAN 2022

SC-5, 30 DEC 2021 to 27 JAN 2022