

KARRR SIX DEPARTURE (RNAV)
(KARRR6.KARRR) 05DEC19

HOUSTON, TEXAS
PEARLAND RGNL (LTYJ)

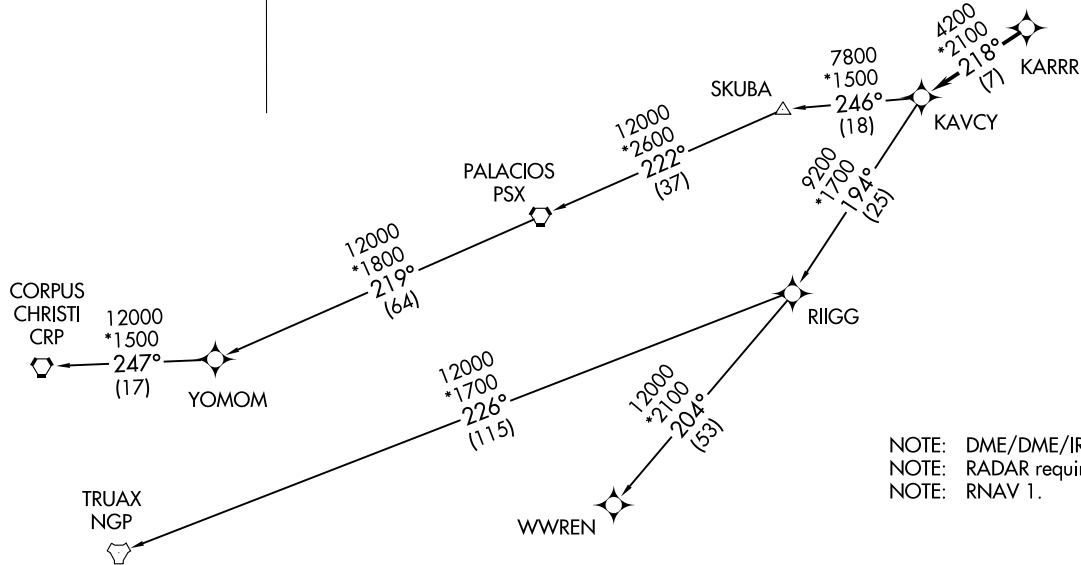
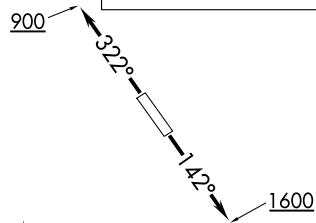
ASOS
118.525
CTAF
122.725
CLNC DEL
124.0
HOUSTON DEP CON
134.45 284.0

TAKEOFF MINIMUMS

Rwys 14, 32:
Standard with minimum climb of 500' per NM to 560.



**TOP ALTITUDE:
ASSIGNED BY ATC**



NOTE: DME/DME/IRU or GPS required.
NOTE: RADAR required.
NOTE: RNAV 1.

(NARRATIVE ON FOLLOWING PAGE)

NOTE: Chart not to scale.

(KARRR6.KARRR) 21056
KARRR SIX DEPARTURE (RNAV)

AL-6460 (FAA)

PEARLAND RGNL (LTYJ)
HOUSTON, TEXAS

KARRR SIX DEPARTURE (RNAV)



DEPARTURE ROUTE DESCRIPTION

TAKEOFF RWY 14: Climb on heading 142° to 1600, for RADAR vectors to KARRR, thence. . . .

TAKEOFF RWY 32: Climb on heading 322° to 900, for RADAR vectors to KARRR, thence. . . .

. . . .on track 218° to KAVCY, then on (transition). Maintain ATC assigned altitude. Expect filed altitude 10 minutes after departure.

CORPUS CHRISTI TRANSITION (KARRR6.CRP)

PALACIOS TRANSITION (KARRR6.PSX)

TRUAX TRANSITION (KARRR6.NGP)

WWREN TRANSITION (KARRR6.WWREN)

YOMOM TRANSITION (KARRR6.YOMOM)

SC-5, 30 DEC 2021 to 27 JAN 2022

SC-5, 30 DEC 2021 to 27 JAN 2022