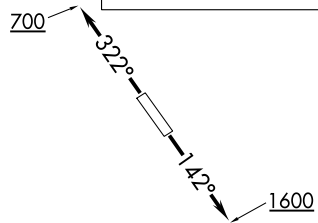


TOP ALTITUDE:
ASSIGNED BY ATC



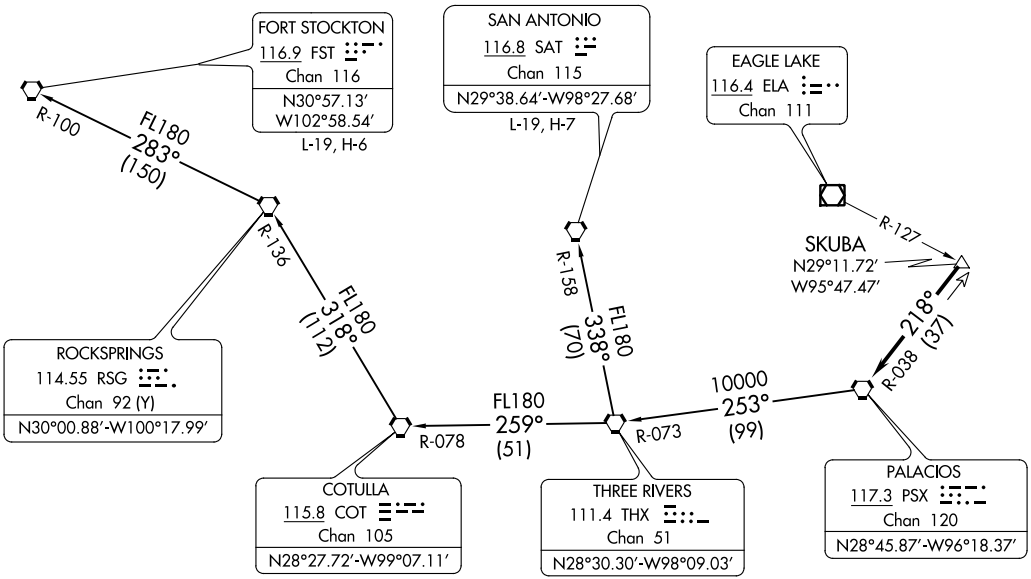
(PSX2, PSX) 21280

AL-6460 (FAA)

PEARLAND RGNL (L Y J)
HOUSTON, TEXAS

TAKEOFF MINIMUMS
Rwys 14, 32: Standard.

ASOS
118.525
CTAF
122.725
CLNC DEL
124.0
HOUSTON DEP CON
134.45 284.0



PALACIOS TWO DEPARTURE
(PSX2, PSX) 07OCT21

HOUSTON, TEXAS
PEARLAND RGNL (L Y J)

NOTE: RADAR required.
NOTE: Chart not to scale.

(NARRATIVE ON FOLLOWING PAGE)

PALACIOS TWO DEPARTURE



DEPARTURE ROUTE DESCRIPTION

TAKEOFF RUNWAY 14: Climb on heading 142° to 1600 before turning, when entering controlled airspace, climb on assigned heading for RADAR vectors to SKUBA INT. Maintain ATC assigned altitude. Expect filed altitude 10 minutes after departure, thence. . . .

TAKEOFF RUNWAY 32: Climb on heading 322° to 700 before turning, when entering controlled airspace, climb on assigned heading for RADAR vectors to SKUBA INT. Maintain ATC assigned altitude. Expect filed altitude 10 minutes after departure, thence. . . .

. . . .on PSX R-038 to PSX VORTAC.

FORT STOCKTON TRANSITION (PSX2.FST): From over PSX VORTAC on PSX R-253 and THX R-073 to THX VORTAC, then on THX R-259 and COT R-078 to COT VORTAC, then on COT R-318 and RSG R-136 to RSG VORTAC, then on RSG R-283 and FST R-100 to FST VORTAC.

SAN ANTONIO TRANSITION (PSX2.SAT): From over PSX VORTAC on PSX R-253 and THX R-073 to THX VORTAC, then on SAT R-158 to SAT VORTAC.

SC-5, 30 DEC 2021 to 27 JAN 2022

SC-5, 30 DEC 2021 to 27 JAN 2022