

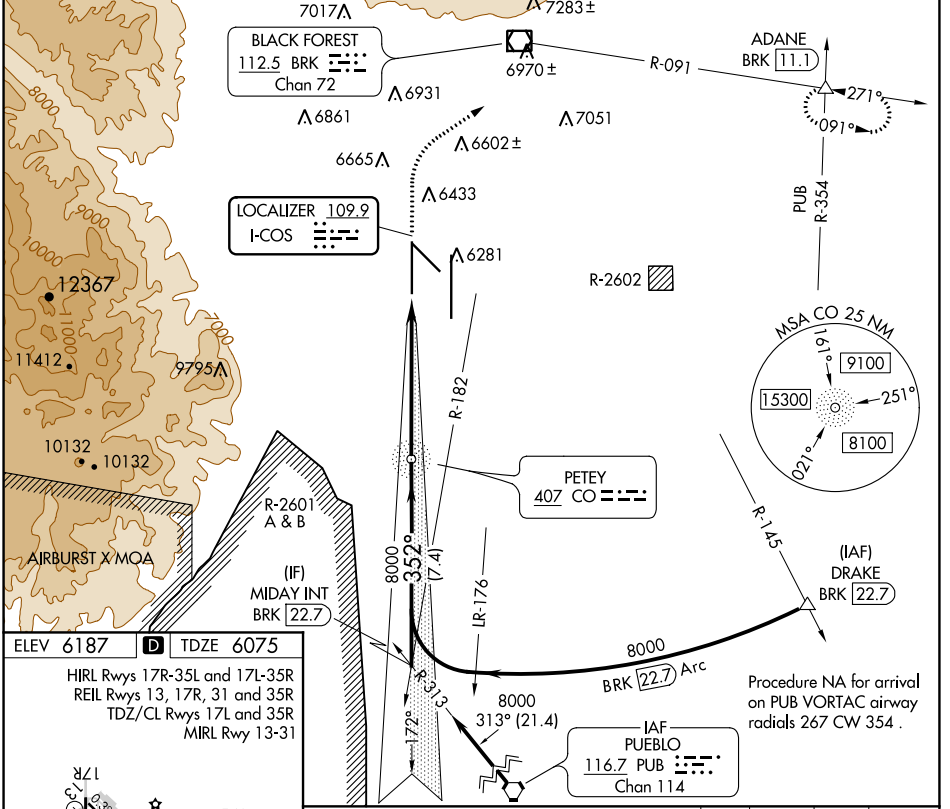
LOC I-COS 109.9	APP CRS 352°	Rwy ldg TDZE Apt Elev	11022 6075 6187
---------------------------	------------------------	-----------------------------	--

ILS RWY 35L (SA CAT II)

CITY OF COLORADO SPRINGS MUNI (COS)

<p>RADAR monitoring required when R-2601 in use. Requires specific OPSPEC, MSPEC, or LOA approval.</p>	<p>MALSRL</p>	<p>MISSED APPROACH: Climb to 6700 then climbing right turn to 9000 on heading 047° and BRK VOR/DME R-091 to ADANE INT/BRK 11.1 DME and hold.</p>

ATIS 125.0 254.3	SPRINGS APP CON 124.0 257.875	SPRINGS TOWER 119.9 360.6	GND CON 121.7 348.6	CLNC DEL 134.45 363.125
----------------------------	---	-------------------------------------	-------------------------------	-----------------------------------



ELEV 6187 **D** TDZE 6075

HIRL Rwy 17R-35L and 17L-35R
REIL Rwy 13, 17R, 31 and 35R
TDZ/CL Rwy 17L and 35R
MIRL Rwy 13-31

MIDAY INT BRK 22.7	CO NDB 7996	6700 9000 BRK R-091	ADANE △
-----------------------	----------------	---------------------------	------------

Procedure NA for arrival on PUB VORTAC airway radials 267 CW 354.

8000 → 352° → 8000

7.4 NM 6 NM 916'

GS 3.00° TCH 51

VGSI and ILS glidepath not coincident (VGSI Angle 3.00/TCH 71).

CATEGORY	A	B	C	D
S-ILS 35L	RA 123/12 100 DA 6175			
SA CATEGORY II ILS - SPECIAL AIRCREW & AIRCRAFT CERTIFICATION REQUIRED				

SW-1, 19 MAY 2022 to 16 JUN 2022

SW-1, 19 MAY 2022 to 16 JUN 2022