

WAAS CH 72800 W17B	APP CRS 172°	Rwy Idg TDZE 6177 Apt Elev 6187	11022
--	------------------------	---	--------------

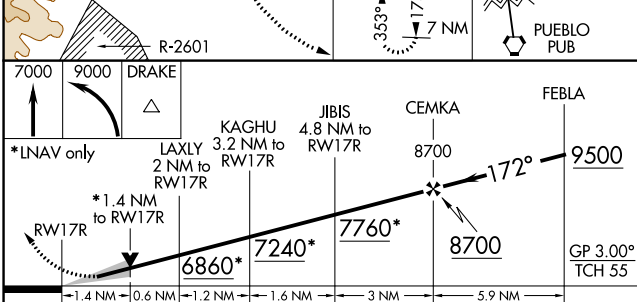
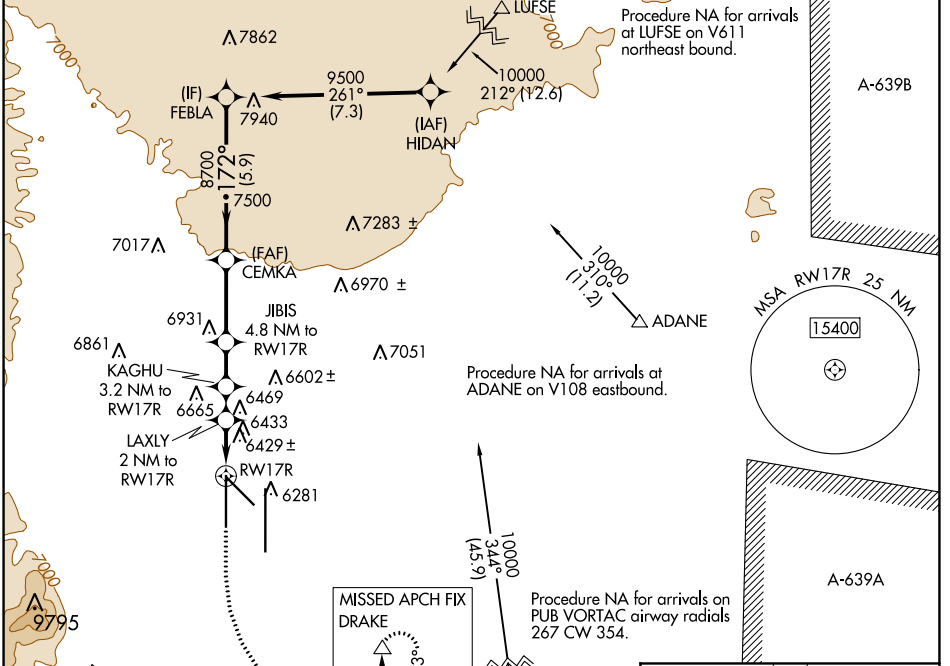
RNAV (GPS) Y RWY 17R

CITY OF COLORADO SPRINGS MUNI (COS)

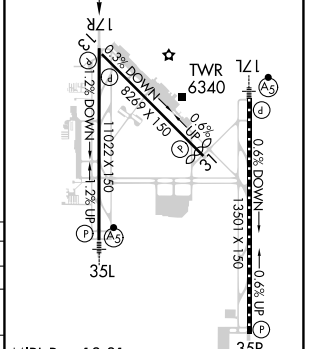
For uncompensated Baro-VNAV systems, LNAV/VNAV NA below -21°C (-5°F) or above 54°C (130°F); DME/DME RNP-0.3 NA. Simultaneous approach authorized with ILS or LOC RWY 17L and ILS RWY 17L (SA CAT I). LNAV procedure NA during simultaneous operations. Use of FD or AP providing RNAV track guidance required during simultaneous operations.

MISSED APPROACH: Climb to 7000 then climbing left turn to 9000 direct DRAKE and hold.

ATIS 125.0 254.3	SPRINGS APP CON 124.0 257.875	SPRINGS TOWER 119.9 360.6	GND CON 121.7 348.6	CLNC DEL 134.45 363.125
----------------------------	---	-------------------------------------	-------------------------------	-----------------------------------



ELEV 6187	D	TDZE 6177
------------------	----------	------------------



CATEGORY	A	B	C	D
LPV DA		6377/40	200 (200-¾)	
LNAV/VNAV DA		6752-2	575 (600-2)	
LNAV MDA	6680/55	503 (500-1)	6680-1 3/8	503 (500-1 3/8)
C CIRCLING	6740-1 553 (600-1)	6800-1 613 (700-1)	7040-2 1/2 853 (900-2 1/2)	7260-3 1073 (1100-3)

MIRL Rwy 13-31
TDZ/CL Rwy 17L and 35R
REIL Rwy 13, 17R, 31 and 35R
HIRL Rwy 17R-35L and 17L-35R

SW-1, 19 MAY 2022 to 16 JUN 2022

SW-1, 19 MAY 2022 to 16 JUN 2022