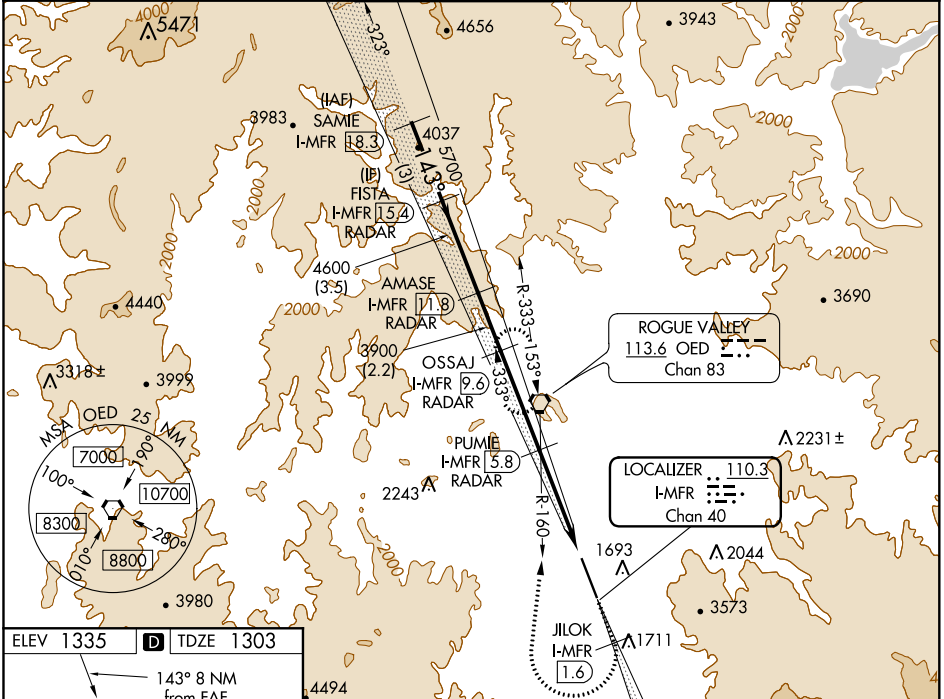


LOC/DME I-MFR	APP CRS	Rwy Idg	8800
110.3	143°	TDZE	1303
Chan 40		Apt Elev	1335

ILS or LOC RWY 14

ROGUE VALLEY INTL-MEDFORD (MFR)

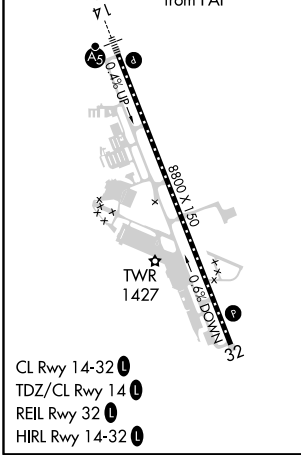
DME required. DME or RADAR required for procedure entry.		MALSR		MISSED APPROACH: Climb to 6600 on I-MFR SE course to JILOK/I-MFR 1.6 DME and climbing right turn on heading 350° and on OED VORTAC R-160 to OED VORTAC and hold, continue climb-in-hold to 6600. #Missed approach requires minimum climb of 331 feet per NM to 4100.	
<p>⚠ Circling NA for Cats C and D northeast of Rwy 14-32. When Medford altimeter setting not received, procedure NA. For inop ALS, increase S-ILS 14 visibility to 1½ SM, increase S-LOC 14# Cats C and D visibility to RVR 5500, increase S-LOC 14 Cats C and D visibility to 2½ SM.</p>					
ATIS	CASCADE APP CON*	MEDFORD TOWER*	GND CON	UNICOM	
127.25	124.3 379.9	119.4 (CTAF) 0257.8	121.8	122.95	



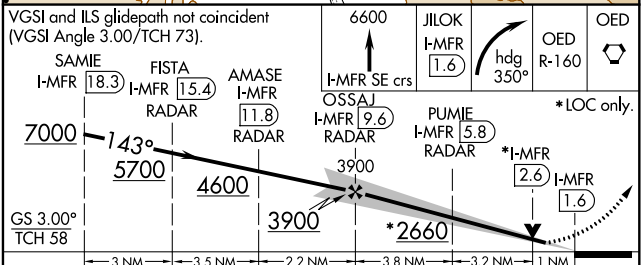
NW-1, 19 MAY 2022 to 16 JUN 2022

NW-1, 19 MAY 2022 to 16 JUN 2022

ELEV 1335	D	TDZE 1303
143° 8 NM from FAF		



MEDFORD, OREGON
Amdt 3 28FEB19



VGSI and ILS glidepath not coincident (VGSI Angle 3.00/TCH 73).	6600			
	JILOK I-MFR 1.6		OED R-160	
	SAMIE I-MFR 18.3		PUMIE I-MFR 5.8	
	FISTA I-MFR 15.4		OSSAJ I-MFR 9.6	
	AMASE I-MFR 11.8		*I-MFR 2.6	
	RADAR		I-MFR 1.6	
GS 3.00° TCH 58	*2660			
	*LOC only.			
CATEGORY	A	B	C	D
S-ILS 14#	1503/18 200 (200-½)			
S-ILS 14	1929-1½ 626 (600-1¾)			
S-LOC 14#	1680/24	377 (400-½)	1680/35	377 (400-¾)
S-LOC 14	2080/24 777 (800-½)	2080/40 777 (800-¾)	2080-1¾	777 (800-1¾)
C CIRCLING	2080-1 745 (800-1)	2080-1¼ 745 (800-1¼)	2080-2½ 745 (800-2½)	2340-3 1005 (1100-3)

ROGUE VALLEY INTL-MEDFORD (MFR)

ILS or LOC RWY 14