

APP CRS 143°	Rwy Idg TDZE Apt Elev	8800 1303 1335
------------------------	-----------------------------	---

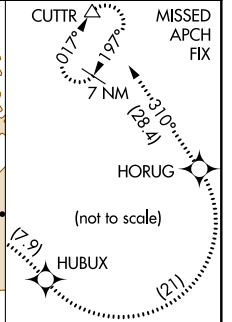
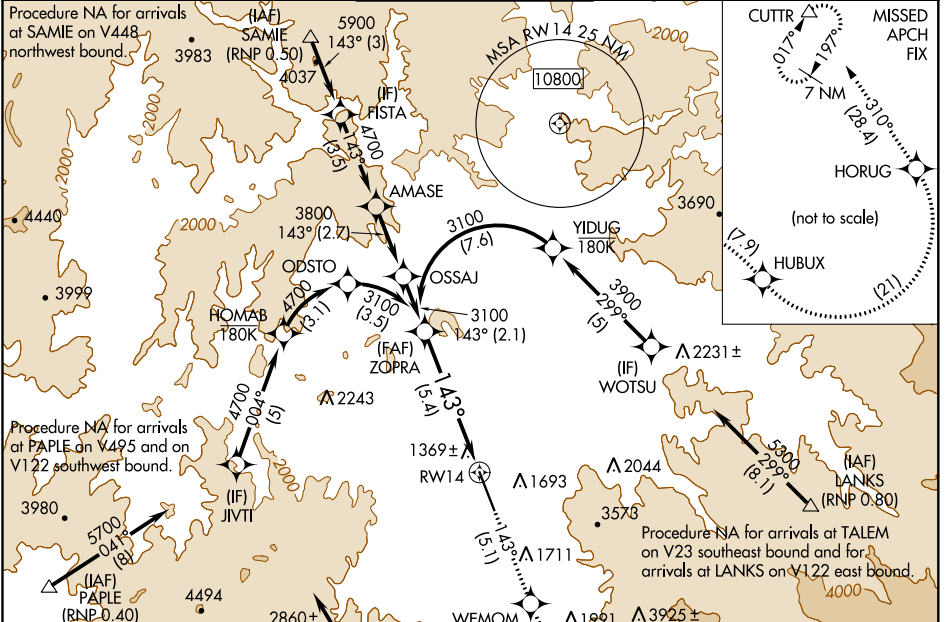
RNAV (RNP) Z RWY 14

ROGUE VALLEY INTL-MEDFORD (MFR)

V GPS required. RF required. For uncompensated Baro-VNAV systems, procedure NA below -8°C (17°F) or above 46°C (115°F). For inop MALSR, increase RNP 0.30 DA* all Cats visibility to RVR 6000, increase RNP 0.30 DA all Cats visibility to 3.
* Missed approach requires minimum climb of 259 feet per NM to 8300.

MALSR MISSED APPROACH: Climb to 9000 on track 143° to WEMOM, left turn to CUDUB, right turn to HUBUX, left turn to HORUG, then on track 310° to CUTTR and hold.

ATIS 127.25	CASCADE APP CON* 124.3 379.9	MEDFORD TOWER* 119.4 (CTAF) 0 257.8	GND CON 121.8	UNICOM 122.95
-----------------------	--	---	-------------------------	-------------------------

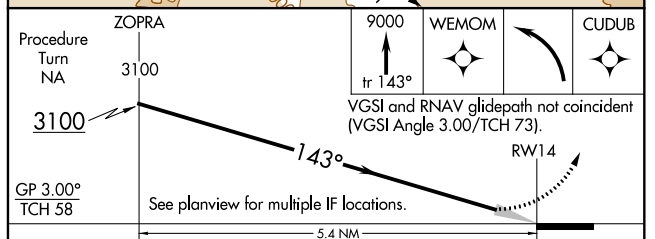
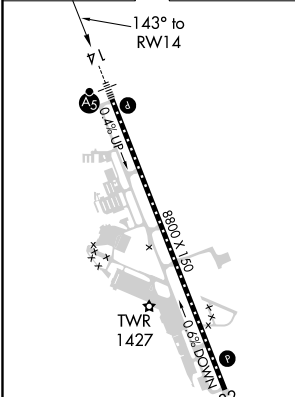


Procedure NA for arrivals at SAMIE on V448 northwest bound.

Procedure NA for arrivals at PABLE on V495 and on V122 southwest bound.

Procedure NA for arrivals at TALEM on V23 southeast bound and for arrivals at LANKS on V122 east bound.

ELEV 1335	D TDZE 1303
-----------	--------------------



- CL Rwy 14-32
- TDZ/CL Rwy 14
- REIL Rwy 32
- HIRL Rwy 14-32

CATEGORY	A	B	C	D
RNP 0.30 DA*		1665/40	362 (400-¾)	
RNP 0.30 DA		2131-2½	828 (800-2½)	

AUTHORIZATION REQUIRED

NW-1, 19 MAY 2022 to 16 JUN 2022

NW-1, 19 MAY 2022 to 16 JUN 2022