


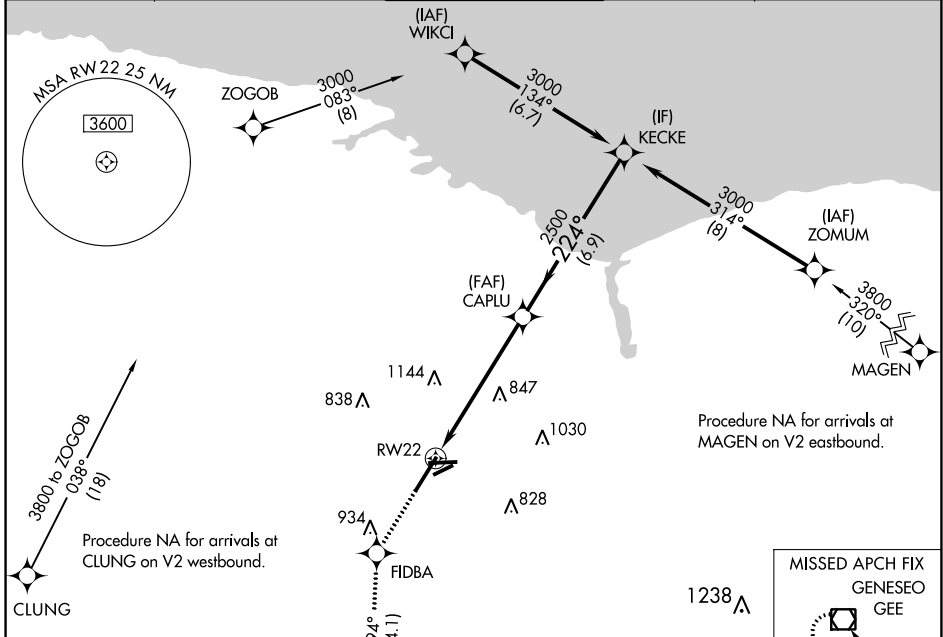
WAAS CH <b>73016</b> <b>W22A</b>	APP CRS <b>224°</b>	Rwy Idg TDZE <b>559</b> Apt Elev <b>559</b>	<b>8001</b>
--	------------------------	---	-------------

# RNAV (GPS) RWY 22

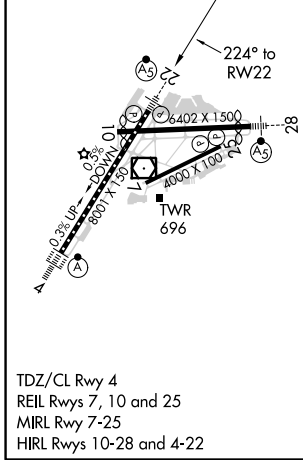
FREDERICK DOUGLASS/GREATER ROCHESTER INTL (ROC)

<p><b>▼</b> For uncompensated Baro-VNAV systems, LNAV/VNAV NA below -18°C (0°F) or above 54°C (130°F), DME/DME RNP-0,3 NA.  <b>▲</b> **RVR 1800 authorized with use of FD or AP or HUD to DA.</p>	<p>MALSR  </p>	<p>MISSED APPROACH: Climb to 4000 direct FIDBA and on track 194° to GEE VOR/DME and hold.</p>
---	---	---

ATIS <b>124.825</b>	ROCHESTER APP CON <b>119.55 269.6</b>	ROCHESTER TOWER <b>118.3 254.3</b>	GND CON <b>121.7</b>	CLNC DEL <b>118.8 343.65</b>
------------------------	--	---------------------------------------	-------------------------	---------------------------------



ELEV 559	<b>D</b>	TDZE 559
----------	----------	----------



	4000 FIDBA	tr 194°	GEE	
	*LNAV only.			
	RW22	CAPLU	KECKE	
	1.2 NM	2500	3000	
	1.2 NM	4.7 NM	6.9 NM	
	GP 3.00° TCH 50			
CATEGORY	A	B	C	D
LPV DA	**759/24 200 (200-½)			
LNAV/VNAV DA	859/25 300 (300-½)			
LNAV MDA	980/24	421 (500-½)	980/40	421 (500-¾)
<b>C</b> CIRCLING	1060-1	501 (600-1)	1500-2¾ 941 (1000-2¾)	1500-3 941 (1000-3)

NE-2, 19 MAY 2022 to 16 JUN 2022

NE-2, 19 MAY 2022 to 16 JUN 2022