

WAAS CH <b>42943</b> <b>W22B</b>	APP CRS <b>221°</b>	Rwy Idg TDZE Apt Elev	<b>6081</b> <b>94</b> <b>98</b>
--	------------------------	-----------------------------	---------------------------------------

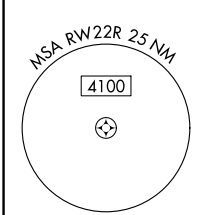
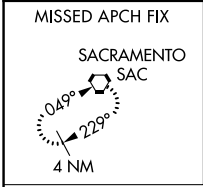
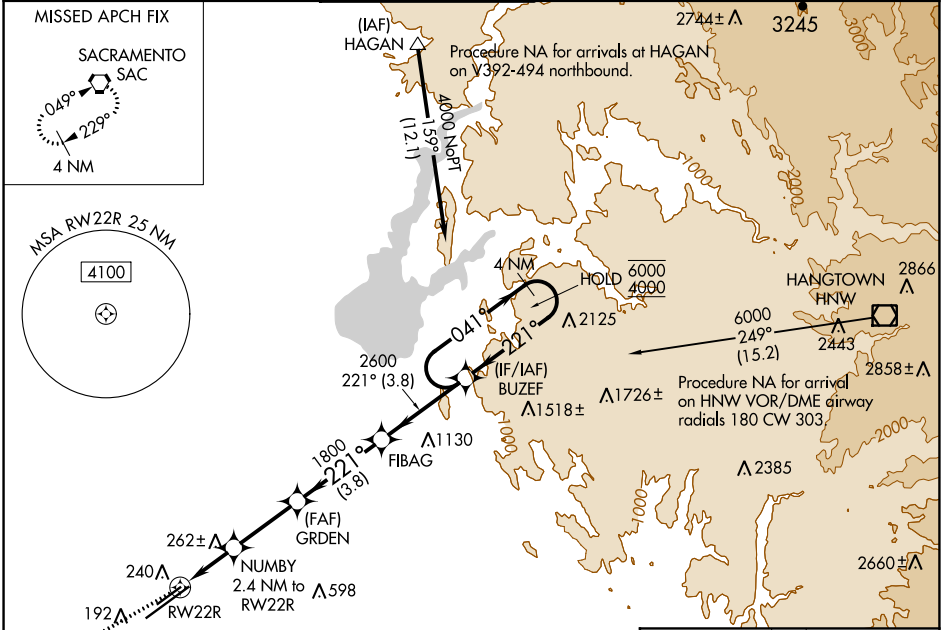
# RNAV (GPS) RWY 22R

SACRAMENTO MATHER (MHR)

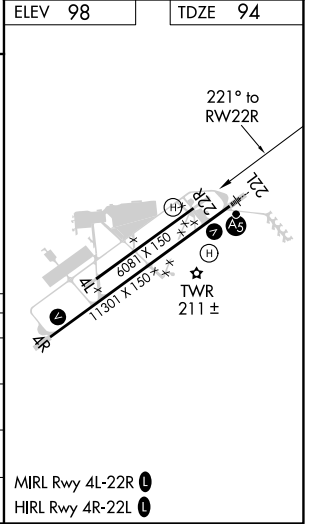
RNP APCH.  
 ⚠ Circling NA northwest of Rwy 4L-22R. For uncompensated Baro-VNAV systems, LNAV/VNAV NA below -15°C or above 54°C.

MISSED APPROACH: Climb to 500 then climb to 3000 direct SAC VORTAC and hold.

ATIS <b>118.325</b>	NORCAL APP CON <b>127.4 317.5</b>	MATHER TOWER ★ <b>120.65 (CTAF) 0 282.25</b>	GND CON <b>121.85 307.9</b>	CLNC DEL <b>121.85 307.9</b>	UNICOM <b>122.95</b>
------------------------	--------------------------------------	---	--------------------------------	---------------------------------	-------------------------



ELEV 98	TDZE 94				
500	3000	SAC			
*LNAV only	NUMBY 2.4 NM to RW22R	GRDEN	FIBAG	BUZEF	4 NM Holding Pattern
*1.4 NM to RW22R	1.800	1800	2600	041° → 6000	← 221° 4000
1.4 NM	1 NM	2.8 NM	3.8 NM	3.8 NM	
CATEGORY	A	B	C	D	
LPV DA	294-3/4		200 (200-3/4)		
LNAV/VNAV DA	369-7/8		275 (300-7/8)		
LNAV MDA	580-1	486 (500-1)	580-13/8	486 (500-13/8)	
ⓐ CIRCLING	580-1	482 (500-1)	600-11/2	800-21/4	
			502 (600-11/2)	702 (800-21/4)	



SW-2, 19 MAY 2022 to 16 JUN 2022

SW-2, 19 MAY 2022 to 16 JUN 2022