

VOR/DME MCC	APP CRS	Rwy Idg	10599
109.2	333°	TDZE	72
Chan 29		Apt Elev	77

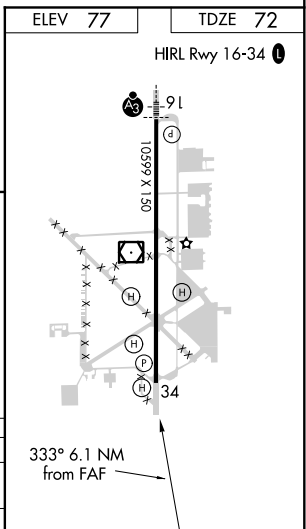
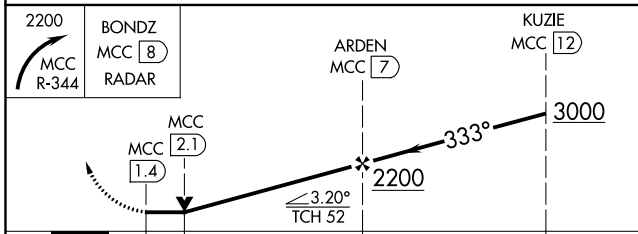
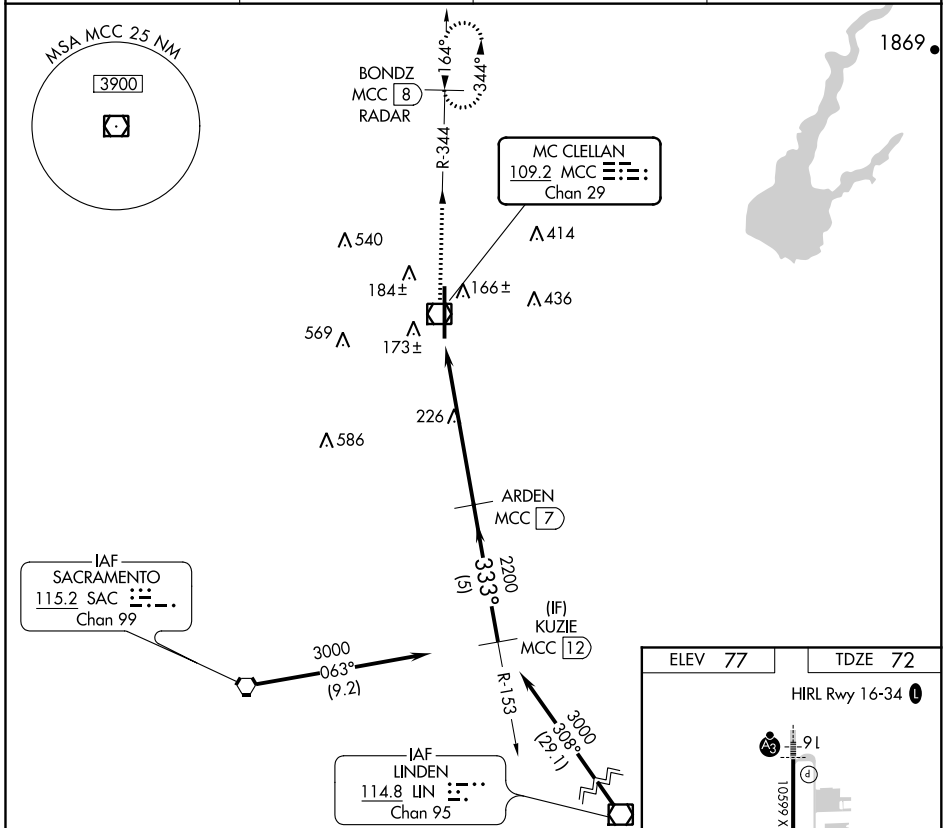
VOR/DME RWY 34

MC CLELLAN AIRFIELD (MCC)

NA VDP NA when using Sacramento Intl altimeter setting. When local altimeter setting not received, use Sacramento Intl altimeter setting and increase all MDAs 40 feet.

MISSED APPROACH: Climbing right turn to 2200 via MCC R-344 to BONDZ/MCC 8 DME/RADAR and hold.

AWOS-3 125.975	NORCAL APP CON 127.4 317.5	CLNC DEL 119.825	UNICOM 122.975 (CTAF) 0
--------------------------	--------------------------------------	----------------------------	-----------------------------------



CATEGORY	A	B	C	D
S-34	500-1	428 (500-1)	500-1½ 428 (500-1½)	500-1½ 428 (500-1½)
CIRCLING	NA			

SW-2, 19 MAY 2022 to 16 JUN 2022

SW-2, 19 MAY 2022 to 16 JUN 2022