

LOC I-OIG	APP CRS	Rwy Idg	<b>9002</b>
<b>111.3</b>	<b>133°</b>	TDZE	<b>1095</b>
		Apt Elev	<b>1098</b>

# ILS or LOC RWY 13

SIoux GATEWAY/BRIG GENERAL BUD DAY FLD (SU<sup>X</sup>)

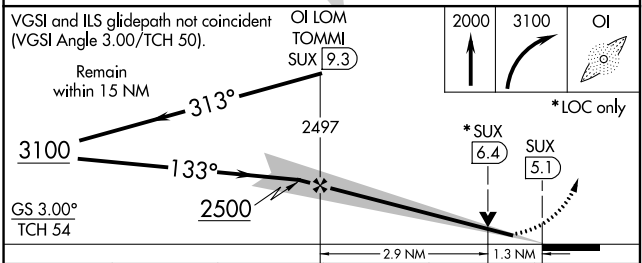
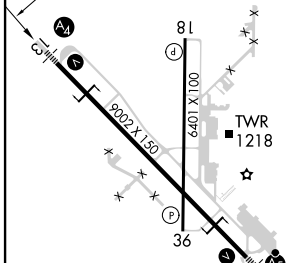
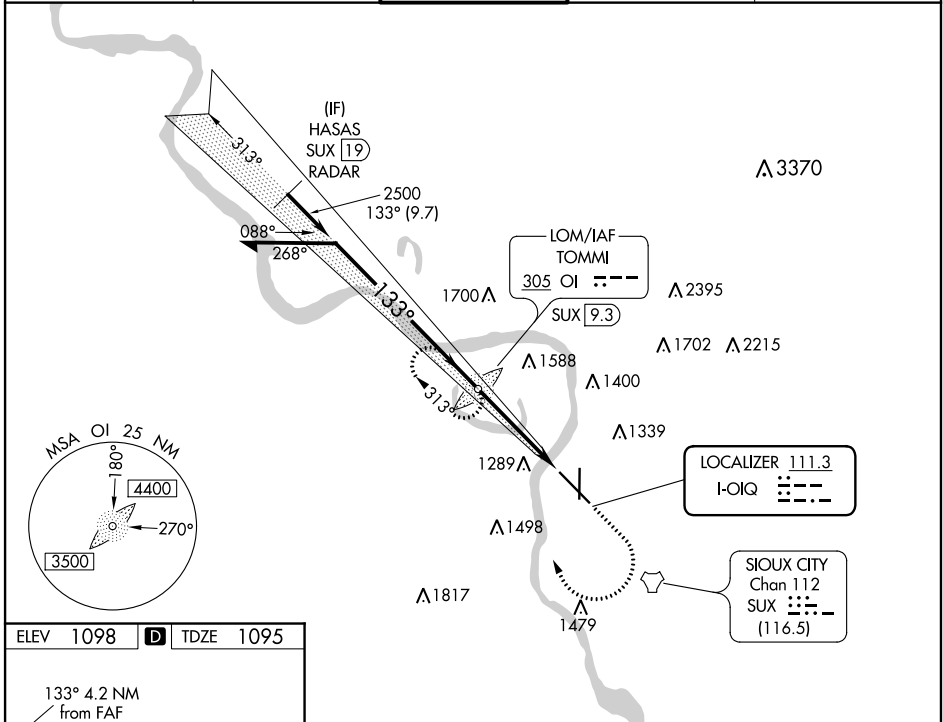
ADF required. ADF or RADAR required for procedure entry.

**▲** For inop ALS, increase S-LOC 13 Cat E visibility to 1 3/8 SM. Inop table does not apply to S-ILS 13.

**MALS**

**MISSED APPROACH:** Climb to 2000 then climbing right turn to 3100 direct TOMMI LOM/SUX 9.3 DME and hold, continue climb-in-hold to 3100

ATIS <b>119.45 270.8</b>	SIoux CITY APP CON * <b>124.6 307.0</b>	SIoux CITY TOWER * <b>118.7 (CTAF) 1 254.3</b>	GND CON <b>121.9 348.6</b>	UNICOM <b>122.95</b>
-----------------------------	--	---	-------------------------------	-------------------------



REIL Rwy 18 1

HIRL Rwy 13-31 1

MIRL Rwy 18-36 1

FAF to MAP 4.2 NM

Knots	60	90	120	150	180
Min:Sec	4:12	2:48	2:06	1:41	1:24

CATEGORY	A	B	C	D	E
S-ILS 13	1295/40 200 (200-3/4)				
S-LOC 13	1560/40	465 (500-3/4)	1560/60 465 (500-1 1/4)		
<b>CIRCLING</b>	1640-1 542 (600-1)	1700-1 602 (700-1)	1700-1 3/4 602 (700-1 1/4)	1800-2 1/4 702 (800-2 1/4)	1940-3 842 (900-3)