
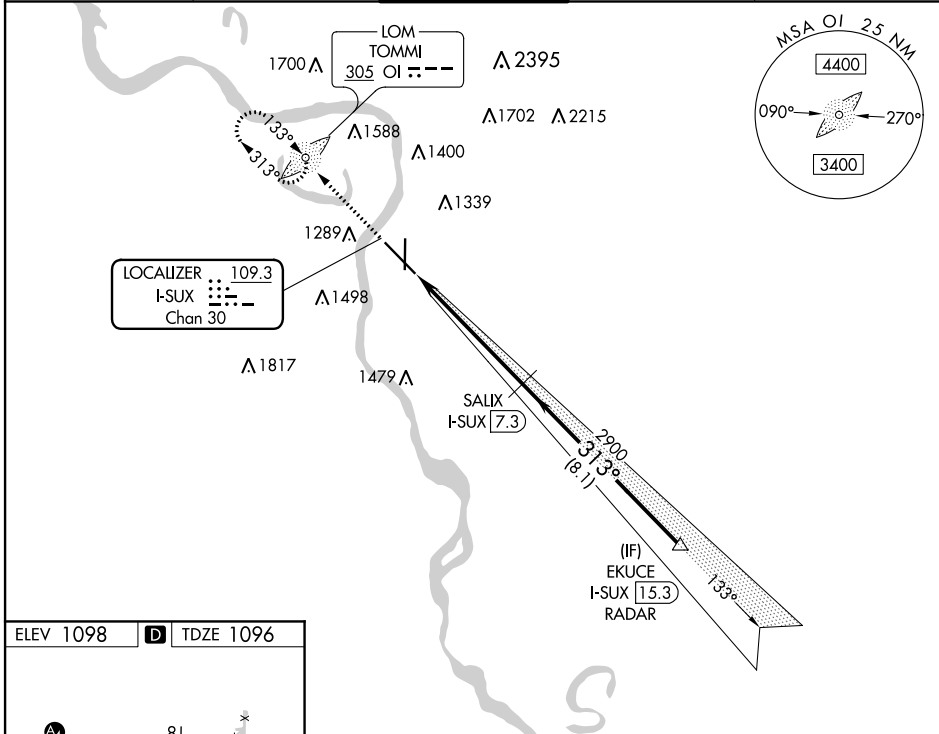


LOC/DME I-SUX 109.3 Chan 30	APP CRS 313°	Rwy Idg TDZE Apt Elev	9002 1096 1098
--	------------------------	-----------------------------	---

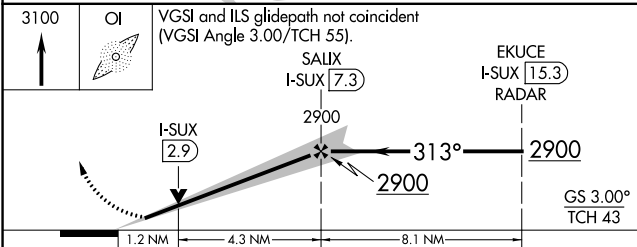
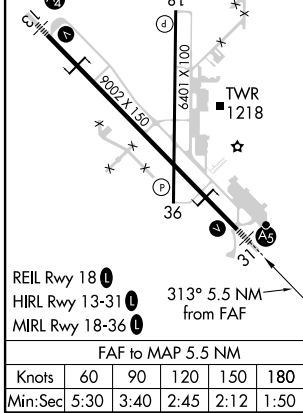
SIoux GATEWAY/BRIG GENERAL BUD DAY FLD (SUX)
ILS or LOC RWY 31

ADF required. DME required for LOC only. RADAR required for procedure entry.
⚠ Autopilot coupled approach NA below 2025 MSL. For inop ALS, increase S-ILS 31 Cat E visibility to RVR 4000 and S-LOC 31 Cat E to 1½ SM.
 *RVR 1800 authorized with use of FD or AP or HUD to DA.
 MALSR  MISSED APPROACH: Climb to 3100 direct TOMMI LOM and hold, continue climb-in-hold to 3100.

ATIS 119.45 270.8	SIoux CITY APP CON * 124.6 307.0	SIoux CITY TOWER * 118.7 (CTAF) 254.3	GND CON 121.9 348.6	UNICOM 122.95
-----------------------------	--	---	-------------------------------	-------------------------



ELEV 1098	D	TDZE 1096
-----------	----------	-----------



CATEGORY	A	B	C	D	E
S-ILS 31*	1296/24 200 (200-½)				
S-LOC 31	1540/24	444 (500-½)	1540/45 444 (500-¾)		
C CIRCLING	1640-1 542 (600-1)	1700-1 602 (700-1)	1700-1¾ 602 (700-1¾)	1860-2½ 762 (800-2½)	1940-3 842 (900-3)

NC-3, 19 MAY 2022 to 16 JUN 2022

NC-3, 19 MAY 2022 to 16 JUN 2022