

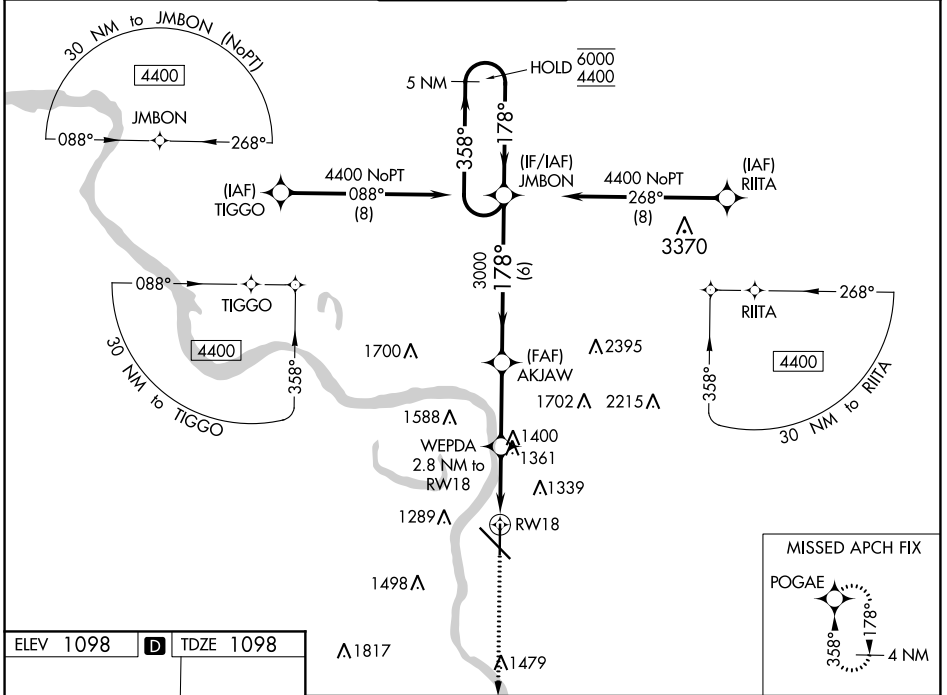
WAAS CH <b>77838</b> <b>W18A</b>	APP CRS <b>178°</b>	Rwy ldg TDZE Apt Elev	<b>6400</b> <b>1098</b> <b>1098</b>
--	------------------------	-----------------------------	---

# RNAV (GPS) RWY 18

SIoux GATEWAY/BRIG GENERAL BUD DAY FLD (SUX)

RNP APCH.		MISSED APPROACH: Climb to 3200 direct POGAE and hold.	
<p>▼ For uncompensated Baro-VNAV systems, LNAV/VNAV                  ▲ NA below -20°C or above 54°C.</p>			

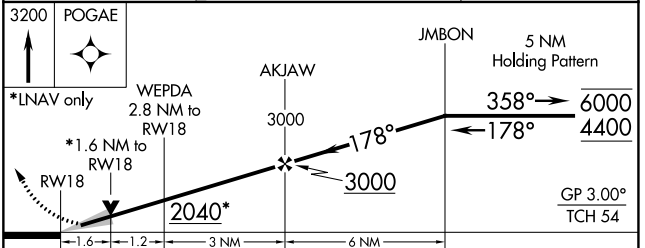
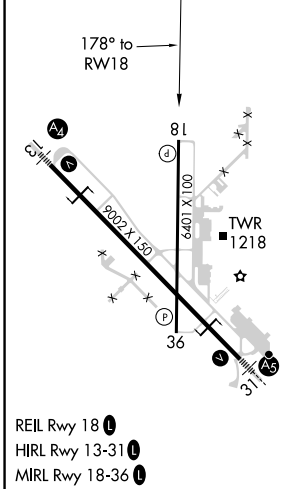
ATIS <b>119.45 270.8</b>	SIoux CITY APP CON * <b>124.6 307.0</b>	SIoux CITY TOWER * <b>118.7 (CTAF) 0 254.3</b>	GND CON <b>121.9 348.6</b>	UNICOM <b>122.95</b>
-----------------------------	--	---	-------------------------------	-------------------------



NC-3, 19 MAY 2022 to 16 JUN 2022

NC-3, 19 MAY 2022 to 16 JUN 2022

ELEV 1098	<b>D</b>	TDZE 1098
-----------	----------	-----------



CATEGORY	A	B	C	D
LPV DA		1352-3/4	254 (300-3/4)	
LNAV/VNAV DA		1430-1	332 (400-1)	
LNAV MDA	1680-1	582 (600-1)	1680-1 3/4	582 (600-1 3/4)
<b>C</b> CIRCLING	1680-1 582 (600-1)	1700-1 602 (700-1)	1700-1 3/4 602 (700-1 3/4)	1860-2 1/2 762 (800-2 1/2)