

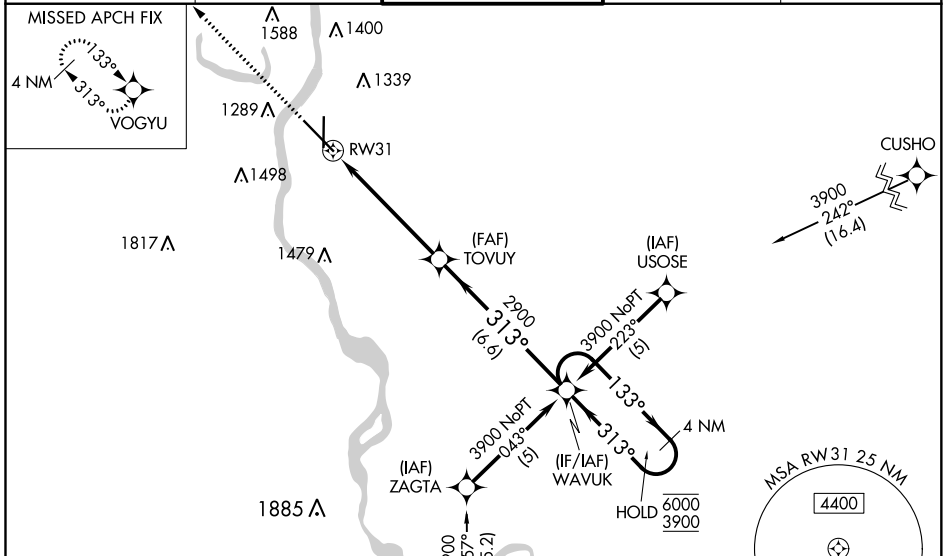
WAAS CH 90211 W31A	APP CRS 313°	Rwy Idg TDZE Apt Elev	9002 1096 1098
--	------------------------	-----------------------------	---

RNAV (GPS) RWY 31

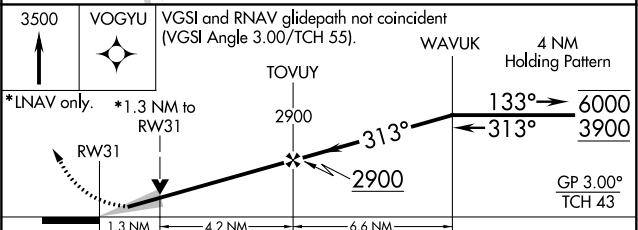
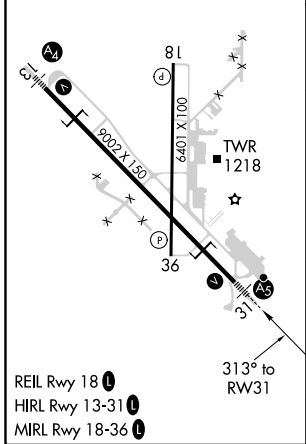
SIoux GATEWAY/BRIG GENERAL BUD DAY FLD (SUx)

RNP APCH. ⚠ For uncompensated Baro-VNAV systems, LNAV/VNAV NA below -21°C or above 54°C. For inop ALS increase LPV Cat E visibility to RVR 4000; increase LNAV/VNAV all Cats visibility to 1½ SM and LNAV Cats C/D/E visibility to 1¾ SM. ** RVR 1800 authorized with use of FD or AP or HUD to DA.	MALSR 	MISSED APPROACH: Climb to 3500 direct VOGYU and hold.
---	-----------	---

ATIS 119.45 270.8	SIoux CITY APP CON * 124.6 307.0	SIoux CITY TOWER * 118.7 (CTAF) 0 254.3	GND CON 121.9 348.6	UNICOM 122.95
-----------------------------	--	---	-------------------------------	-------------------------



ELEV 1098	D	TDZE 1096
-----------	---	-----------



CATEGORY	A	B	C	D	E
LPV DA**	1296/24		200 (200-½)		
LNAV/VNAV DA	1596-1¼		500 (500-1¼)		
LNAV MDA	1560/24 464 (500-½)		1560/50 464 (500-1)		
CIRCLING	1640-1 542 (600-1)	1700-1 602 (700-1)	1700-1¾ 602 (700-1¾)	1840-2½ 742 (800-2½)	2000-3 902 (1000-3)

NC-3, 19 MAY 2022 to 16 JUN 2022

NC-3, 19 MAY 2022 to 16 JUN 2022