

WAAS CH <b>72910</b> W <b>11A</b>	APP CRS <b>114°</b>	Rwy Idg <b>8650</b> TDZE <b>29</b> Apt Elev <b>33</b>
---	------------------------	---

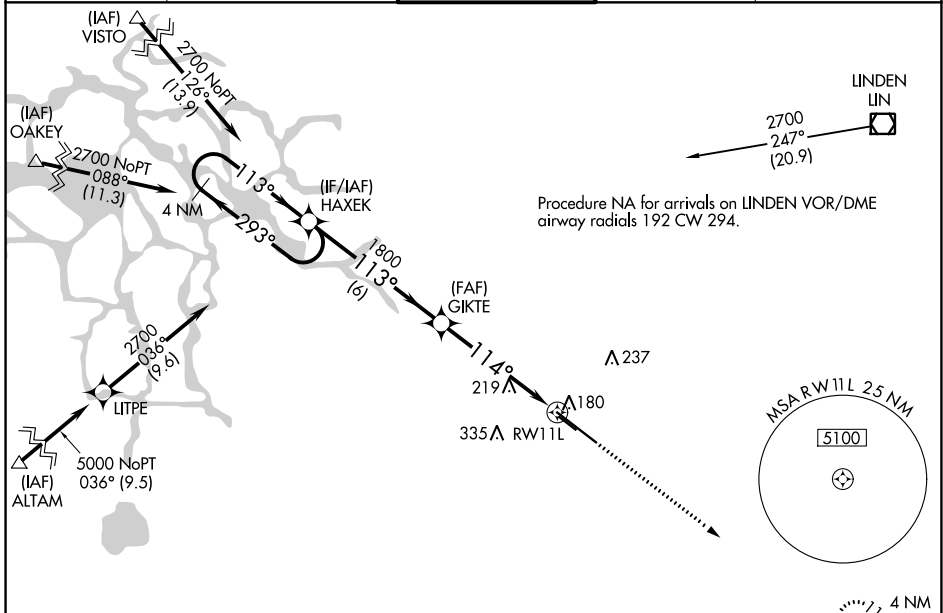
# RNAV (GPS) RWY 11L

STOCKTON METRO (SCK)

**▽** For uncompensated Baro-VNAV systems, LNAV/VNAV NA below -4°C (25°F) or above 54°C (130°F). DME/DME RNP-0.3 NA.

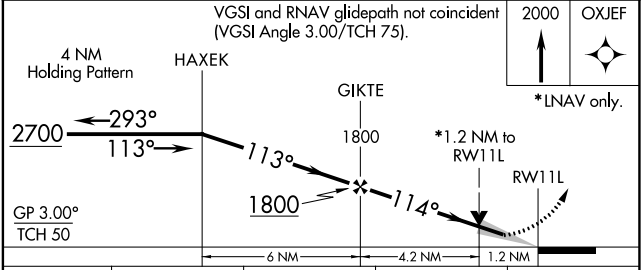
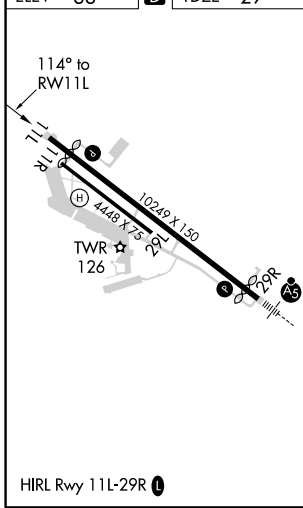
MISSED APPROACH: Climb to 2000 direct OXJEF and hold.

ATIS <b>118.25</b>	NORCAL APP CON (SE-NW) <b>123.85 278.3</b> (N-SE) <b>125.1 363.2</b>	STOCKTON TOWER * <b>120.3</b> (CTAF) <b>0 239.0</b>	GND CON <b>121.9</b>	UNICOM <b>122.95</b>
-----------------------	--	--	-------------------------	-------------------------



**A1552**

ELEV 33	<b>D</b>	TDZE 29
---------	----------	---------



CATEGORY	A	B	C	D
LPV DA		229-3/4	200 (200-3/4)	
LNAV/VNAV DA		471-1 1/2	442 (500-1 1/2)	
LNAV MDA	480-1	451 (500-1)	480-1 3/8	451 (500-1 3/8)
<b>C</b> CIRCLING	500-1 467 (500-1)	540-1 507 (600-1)	640-1 3/4 607 (700-1 3/4)	640-2 607 (700-2)

SW-2, 19 MAY 2022 to 16 JUN 2022

SW-2, 19 MAY 2022 to 16 JUN 2022