

TIKEE THREE ARRIVAL (RNAV)

WASHINGTON, DC

NE-3, 19 MAY 2022 to 16 JUN 2022

ARRIVAL ROUTE DESCRIPTION

BBONE TRANSITION (BBONE.TIKEE3):

KESSEL TRANSITION (ESL.TIKEE3):

SEALZ TRANSITION (SEALZ.TIKEE3):

All aircraft types landing HEF, 2VG2, NYG, RMN, HWY, CJR, EZF: From TIKEE on track 090° to JETIS, then on heading 090° or as assigned by ATC. Expect RADAR vectors to final approach course.

Props and Turboprop aircraft landing DAA, W00, VKX, ADW, 2W5, DCA, W32: From TIKEE on track 122° to GILFF, then on track 090° to HIGPO, then on heading 090° or as assigned by ATC. Expect RADAR vectors to final approach course.

POTOMAC APP CON
120.45 306.925
DCA D-ATIS
132.65
KADW D-ATIS
133.675 251.05
*KDAW ATIS
128.175

NOTE: RADAR required.

NOTE: RNAV 1.

NOTE: DME/DME/IRU or GPS required.

NOTE: Procedure available to all type aircraft landing the following airports: 2VG2, CJR, HWY, HEF, RMN, EZF, NYG.

NOTE: Props or Turboprop aircraft only landing the following airports: DAA, 2W5, VKX, W32, W00, DCA, ADW.

KESSEL
ESL
FL190



7000
*5200
5600
178°
(37)

7000
*5200
107°
(12)

LURAY 7000
*6300
(7)

7000
086°
(42)

SEALZ

6300
087°
(9)

TIKEE

LLBEE
9000

5200
090°
(3)

JETIS

CUPIPER
RGNL
5200
122°
(41)

WARRENTON/
FAUCQUIER

5200
090°
(3)

GILFF

STAFFORD
RGNL
3000
*1500

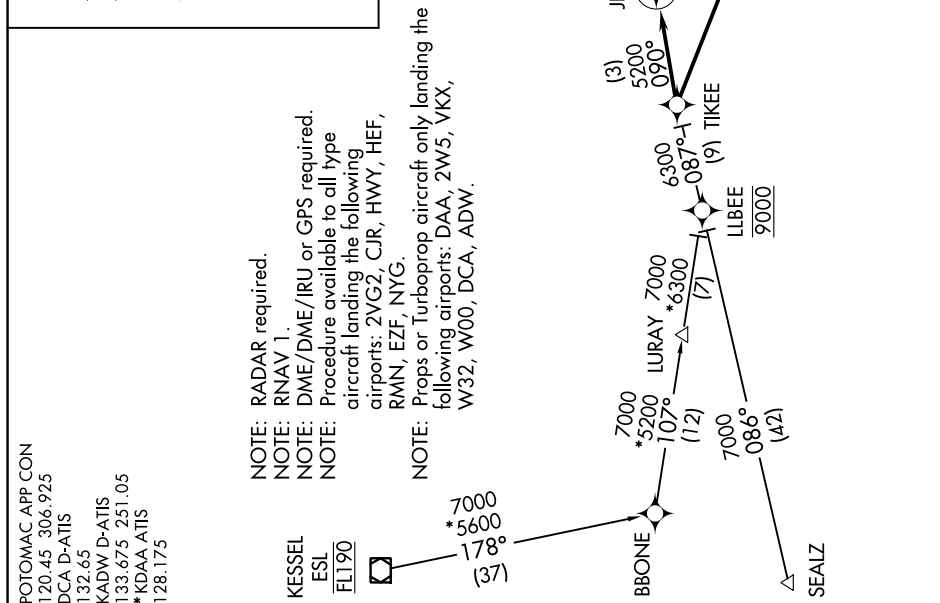
HIGPO

5200
090°
(3)

HIGPO

QUANTICO MCAF
(TURNER FLD)

SHANNON



TIKEE THREE ARRIVAL (RNAV)

WASHINGTON, DC

NE-3, 19 MAY 2022 to 16 JUN 2022

NOTE: Chart not to scale