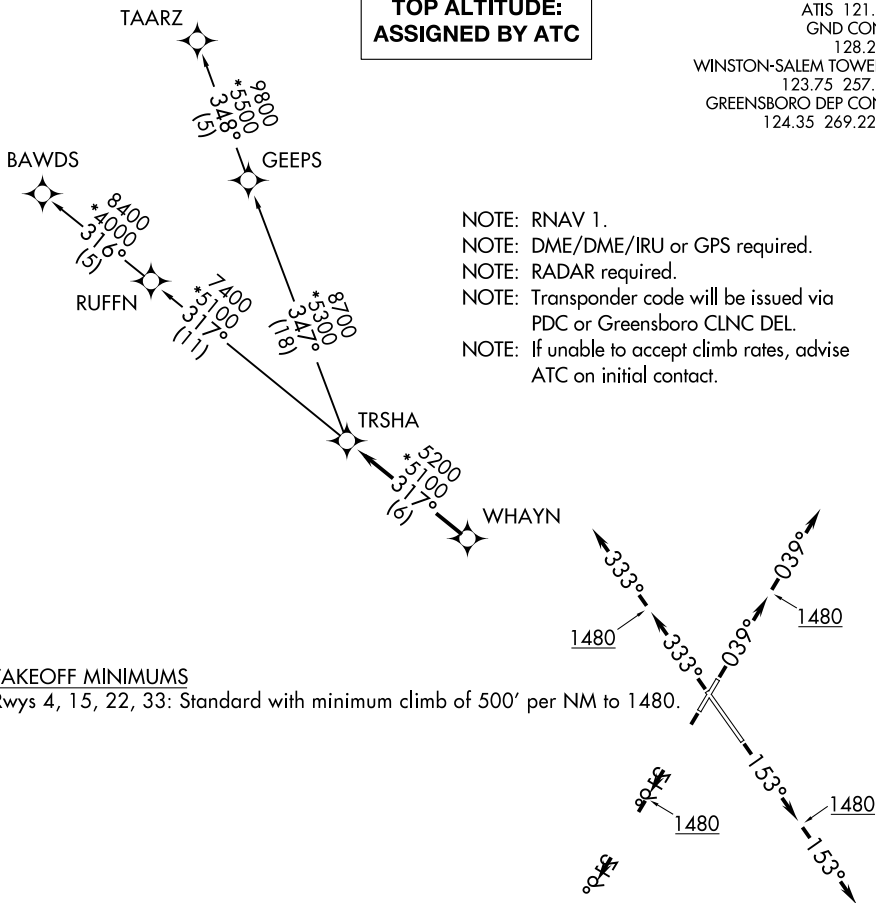


# TRSHA ONE DEPARTURE (RNAV)

WINSTON-SALEM, NORTH CAROLINA

**TOP ALTITUDE:  
ASSIGNED BY ATC**

ATIS 121.3  
GND CON 128.25  
WINSTON-SALEM TOWER ★ 123.75 257.8  
GREENSBORO DEP CON 124.35 269.225



- NOTE: RNAV 1.
- NOTE: DME/DME/IRU or GPS required.
- NOTE: RADAR required.
- NOTE: Transponder code will be issued via PDC or Greensboro CLNC DEL.
- NOTE: If unable to accept climb rates, advise ATC on initial contact.

### TAKEOFF MINIMUMS

Rwys 4, 15, 22, 33: Standard with minimum climb of 500' per NM to 1480.

NOTE: Chart not to scale.

### DEPARTURE ROUTE DESCRIPTION

- TAKEOFF RWY 4:** Climb heading 039° to 1480, then on heading 039°. Thence. . . .
- TAKEOFF RWY 15:** Climb heading 153° to 1480, then on heading 153°. Thence. . . .
- TAKEOFF RWY 22:** Climb heading 219° to 1480, then on heading 219°. Thence. . . .
- TAKEOFF RWY 33:** Climb heading 333° to 1480, then on heading 333°. Thence. . . .

. . . . expect RADAR vectors to WHAYN, then on track 317° to TRSHA, then on assigned transition. Maintain altitude assigned by ATC. Expect clearance to filed altitude within ten (10) minutes after departure.

BAWDS TRANSITION (TRSHA1.BAWDS)

TAARZ TRANSITION (TRSHA1.TAARZ)

# TRSHA ONE DEPARTURE (RNAV)