

(MYZNR2.MYZNR) 22139

AL-560 (FAA)

BOCA RATON (BCT)  
BOCA RATON, FLORIDA

# MYZNR TWO DEPARTURE (RNAV)

AWOS-3  
121.125  
CLNC DEL  
121.8  
GND CON  
121.8  
BOCA RATON TOWER \*  
118.425 (CTAF)  
PALM BEACH DEP CON  
127.35 343.6

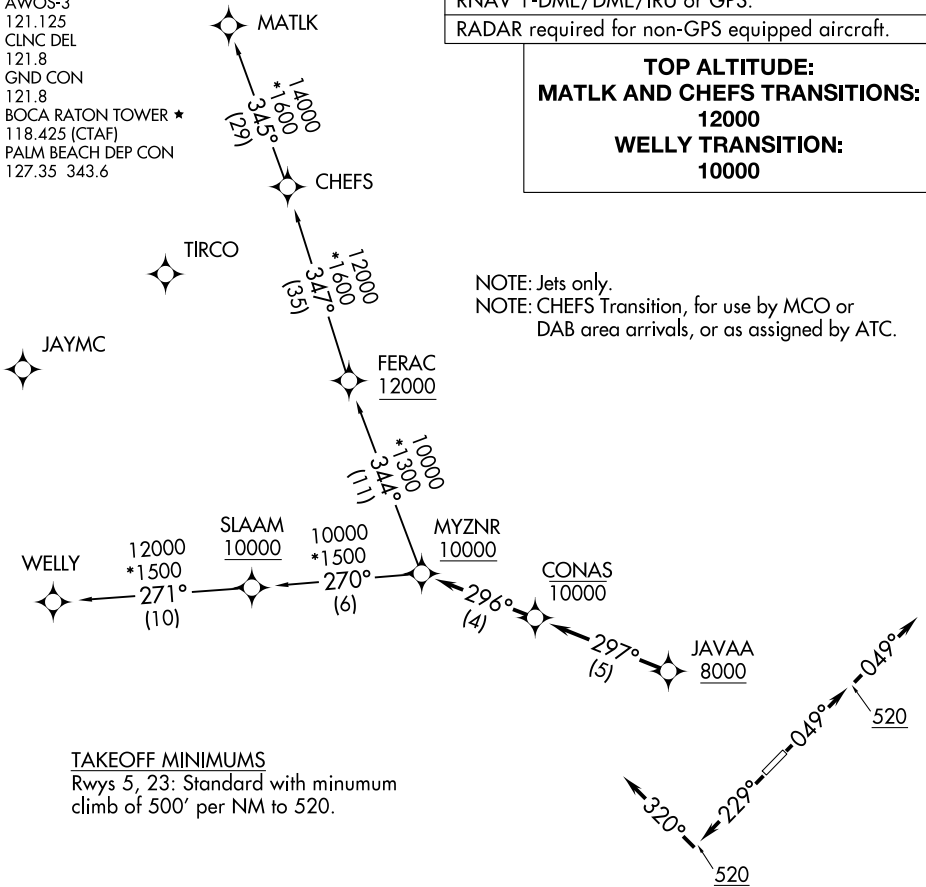
RNAV 1-DME/DME/IRU or GPS.

RADAR required for non-GPS equipped aircraft.

**TOP ALTITUDE:**  
**MATLK AND CHEFS TRANSITIONS:**  
**12000**  
**WELLY TRANSITION:**  
**10000**

NOTE: Jets only.

NOTE: CHEFS Transition, for use by MCO or DAB area arrivals, or as assigned by ATC.



### TAKEOFF MINIMUMS

Rwys 5, 23: Standard with minimum climb of 500' per NM to 520.

NOTE: Chart not to scale.

## DEPARTURE ROUTE DESCRIPTION

TAKEOFF RUNWAY 5: Climb on heading 049° to 520, then on heading 049° or as assigned by ATC, for vectors to cross JAVAA at or above 8000, thence. . .

TAKEOFF RUNWAY 23: Climb on heading 229° to 520, then on heading 320° or as assigned by ATC, for vectors to cross JAVAA at or above 8000, thence. . .

. . . on track 297° to cross CONAS at or below 10000, then on track 296° to cross MYZNR at or above 10000. Maintain ATC assigned altitude, expect clearance to filed altitude within 10 minutes after departure.

CHEFS TRANSITION (MYZNR2.CHEFS)

MATLK TRANSITION (MYZNR2.MATLK)

WELLY TRANSITION (MYZNR2.WELLY)

# MYZNR TWO DEPARTURE (RNAV)

(MYZNR2.MYZNR) 19MAY22

BOCA RATON, FLORIDA  
BOCA RATON (BCT)

SE-3, 19 MAY 2022 to 16 JUN 2022