

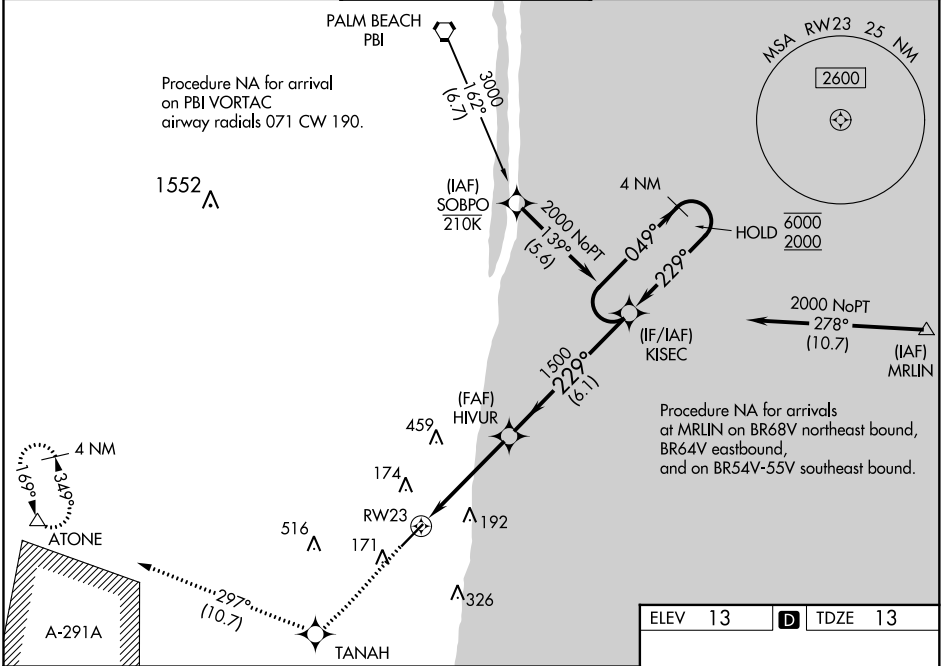
WAAS CH 42801 W23A	APP CRS 229°	Rwy Idg TDZE Apt Elev	5898 13 13
--	------------------------	-----------------------------	---------------------------------------

RNAV (GPS) Y RWY 23

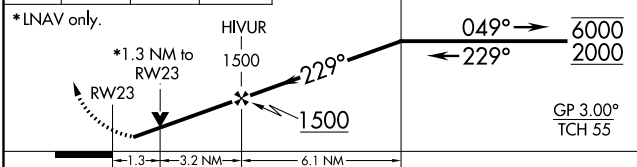
BOCA RATON (BCT)

RNP APCH.	MISSED APPROACH: Climb to 2100 direct TANAHA and on track 297° to ATONE and hold.
<p>▼ Rwy 23 helicopter visibility reduction below ¾ SM NA. For uncompensated Baro-VNAV systems, procedure NA below -15°C or above 54°C. In minimum visibility conditions, bright lights on highway ¼ mile north of airport may be mistaken as runway lights.</p>	

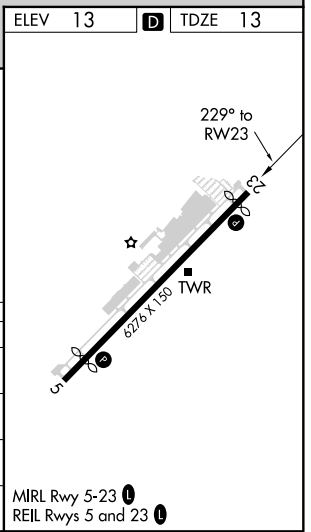
AWOS-3 121.125	PALM BEACH APP CON 127.35 343.6	BOCA RATON TOWER ★ 118.425 (CTAF) 0	GND CON 121.8	CLNC DEL 121.8	GCO 127.35
--------------------------	---	---	-------------------------	--------------------------	----------------------



2100	TANAHA	tr 297°	ATONE Δ	VGSI and RNAV glidepath not coincident (VGSI Angle 3.25/TCH 22).	KISEC	4 NM Holding Pattern
------	--------	---------	----------------	--	-------	----------------------



CATEGORY	A	B	C	D
LPV DA	263-7/8 250 (300-7/8)			
LNAV/DA	357-1 1/8 344 (400-1 1/8)			
LNAV MDA	480-1 467 (500-1)	480-1 3/8 467 (500-1 3/8)		
C CIRCLING	680-1 667 (700-1)	680-1 3/4 667 (700-1 3/4)	880-2 3/4 867 (900-2 3/4)	



SE-3, 19 MAY 2022 to 16 JUN 2022

SE-3, 19 MAY 2022 to 16 JUN 2022