

(TURPS2.TURPS) 22139

AL-560 (FAA)

BOCA RATON (BCT)  
BOCA RATON, FLORIDA

# TURPS TWO DEPARTURE (RNAV)

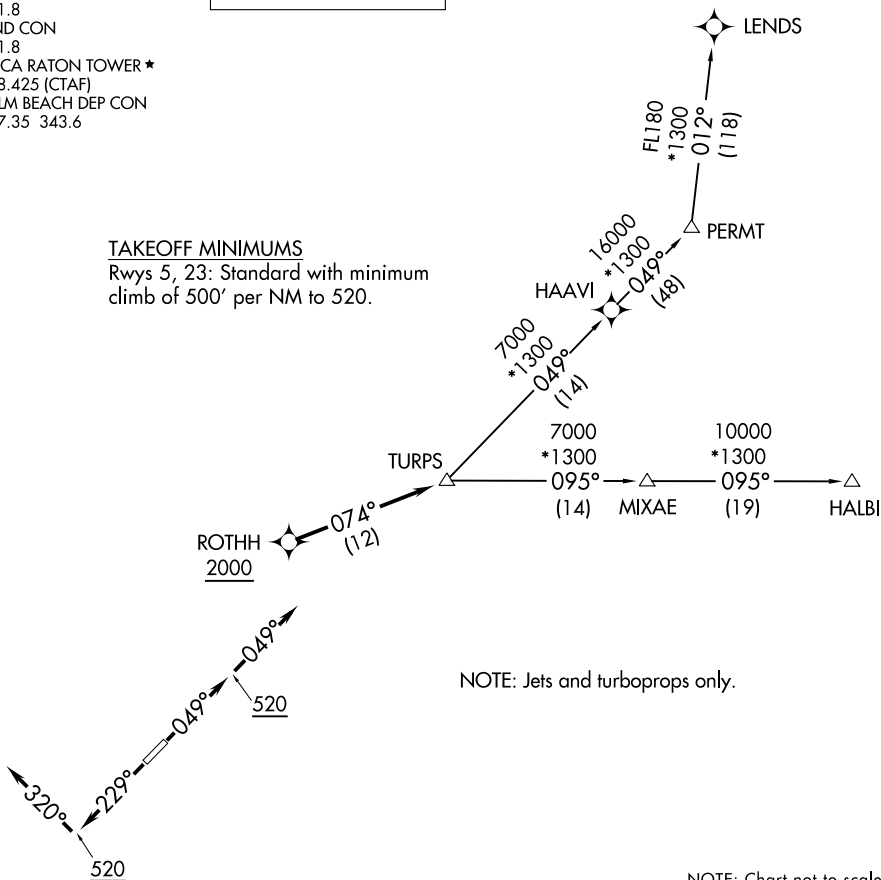
AWOS-3  
121.125  
CLINC DEL  
121.8  
GND CON  
121.8  
BOCA RATON TOWER ★  
118.425 (CTAF)  
PALM BEACH DEP CON  
127.35 343.6

**TOP ALTITUDE:  
2000**

RNAV-1 DME/DME/IRU or GPS.  
RADAR required.

### TAKEOFF MINIMUMS

Rwys 5, 23: Standard with minimum  
climb of 500' per NM to 520.



NOTE: Jets and turboprops only.

NOTE: Chart not to scale.



## DEPARTURE ROUTE DESCRIPTION

TAKEOFF RUNWAY 5: Climb on heading 049° to 520, then on heading 049°, or as assigned by ATC, for vectors to cross ROTHH at or above 2000, thence. . . .

TAKEOFF RUNWAY 23: Climb on heading 229° to 520, then on heading 320°, or as assigned by ATC, for vectors to cross ROTHH at or above 2000, thence. . . .

. . . .on track 074° to TURPS, maintain 2000, then on assigned transition, expect clearance to filed altitude within 10 minutes after departure.

HALBI TRANSITION (TURPS2.HALBI)

LEND'S TRANSITION (TURPS2.LEND'S)

PERMT TRANSITION (TURPS2.PERMT)

**TURPS TWO DEPARTURE (RNAV)**  
(TURPS2.TURPS) 19MAY22

BOCA RATON, FLORIDA  
BOCA RATON (BCT)

SE-3, 19 MAY 2022 to 16 JUN 2022

SE-3, 19 MAY 2022 to 16 JUN 2022