

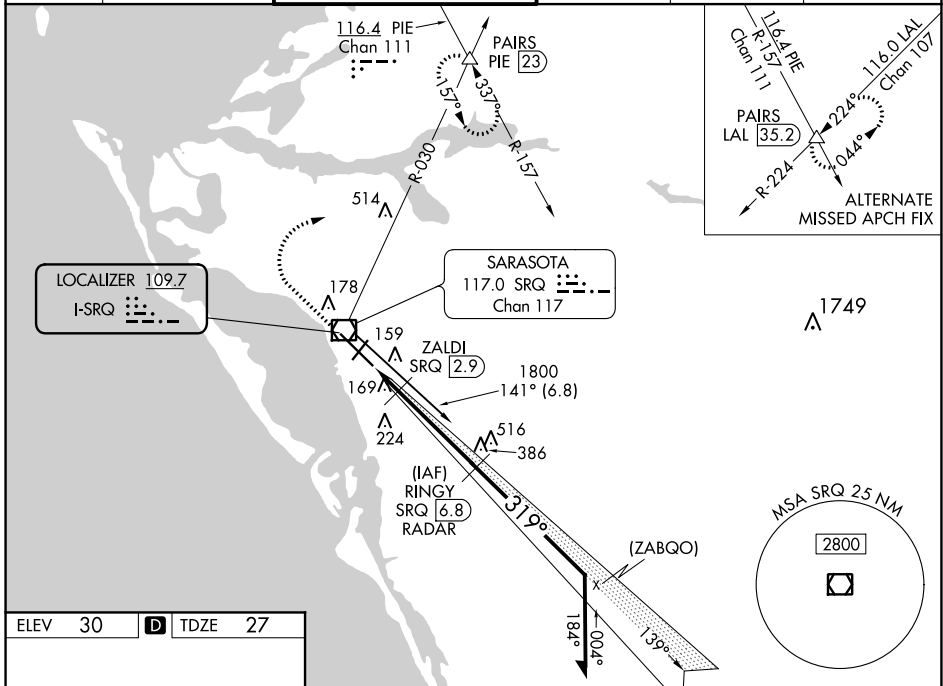
LOC I-SRQ <b>109.7</b>	APP CRS <b>319°</b>	Rwy Idg TDZE Apt Elev	<b>7510</b> <b>27</b> <b>30</b>
---------------------------	------------------------	-----------------------------	---------------------------------------

# ILS or LOC RWY 32

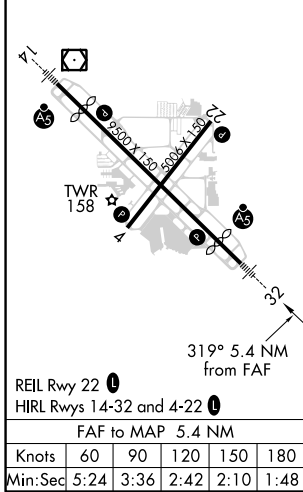
SARASOTA/BRADENTON INTL (SRQ)

DME or RADAR required.	MALSR AS	MISSED APPROACH: Climb to 1000 then climbing right turn to 3000 on heading 065° and SRQ VOR/DME R-030 to PAIRS INT/PIE VORTAC 23 DME and hold, continue climb-in-hold to 3000.
<p>Autopilot coupled approach NA below 840. When control tower closed, S-ILS 32 Minimums NA, increase S-LOC 32 and ZALDI Fix Minimums S-LOC 32 all Cats visibility to 1. When control tower closed, inop table does not apply to S-LOC 32 and ZALDI Fix Minimums all Cats.</p>		

ATIS <b>124.375</b>	TAMPA APP CON <b>119.65 353.575</b>	SARASOTA TOWER ★ <b>120.1(CTAF) 0 256.8</b>	GND CON <b>121.9 273.6</b>	CLNC DEL <b>118,25</b>	UNICOM <b>122.95</b>
------------------------	--	--	-------------------------------	---------------------------	-------------------------



ELEV 30	<b>D</b>	TDZE 27
---------	----------	---------



1000	3000	SRQ R-030	PAIRS	RINGY SRQ (6.8) RADAR	Remain within 10 NM
↑	hdg 065°		△		
*LOC only.					
GS 3.00° TCH 53					

SE-3, 19 MAY 2022 to 16 JUN 2022

SE-3, 19 MAY 2022 to 16 JUN 2022