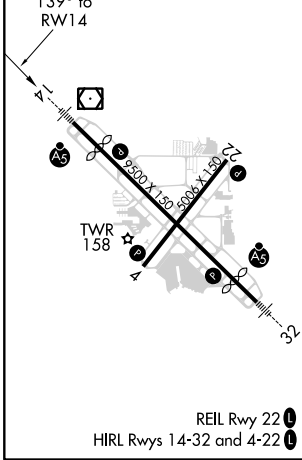
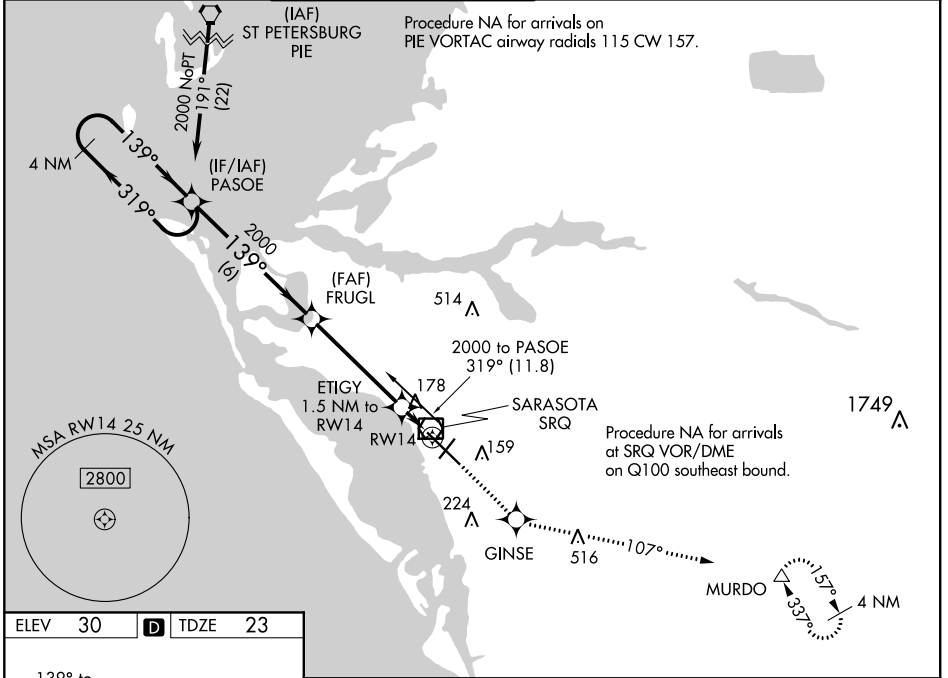


WAAS CH 86705	APP CRS W14A 139°	Rwy Idg 7540 TDZE 23 Apt Elev 30
-------------------------	-----------------------------	---

RNAV (GPS) RWY 14

SARASOTA/BRADENTON INTL (SRQ)

RNP APCH.			GND CON 121.9 273.6		CLNC DEL 118.25		UNICOM 122.95	
▼ For uncompensated Baro-VNAV systems, LNAV/VNAV NA below -15°C or above 43°C. When control tower closed, LPV and LNAV/VNAV NA; increase LNAV all Cats visibility to 1 mile. When control tower closed, inop table does not apply to LNAV Cats A and B. When control tower closed, for inop MALSR, increase LNAV Cats C and D visibility to 1½ mile.					MALSR 		MISSED APPROACH: Climb to 3000 direct GINSE and on track 107° to MURDO and hold.	
ATIS 124.375			TAMPA APP CON 119.65 353.575		SARASOTA TOWER ★ 120.1 (CTAF) 0 256.8			



4 NM Holding Pattern	PASOE	FRUGL	GINSE	MURDO
2000	2000	2000	3000	
← 319°	→ 139°	↘	↑	tr 107°
GP 3.00°	TCH 54	*560		
		6 NM	4.5 NM	1.5 NM
CATEGORY	A	B	C	D
LPV DA	223-½		200 (200-½)	
LNAV/VNAV DA	489-1⅛		466 (500-1⅛)	
LNAV MDA	440-½	417 (500-½)	440-¾	417 (500-¾)
CIRCLING	500-1	470 (500-1)	600-1½	600-2
			570 (600-1½)	570 (600-2)