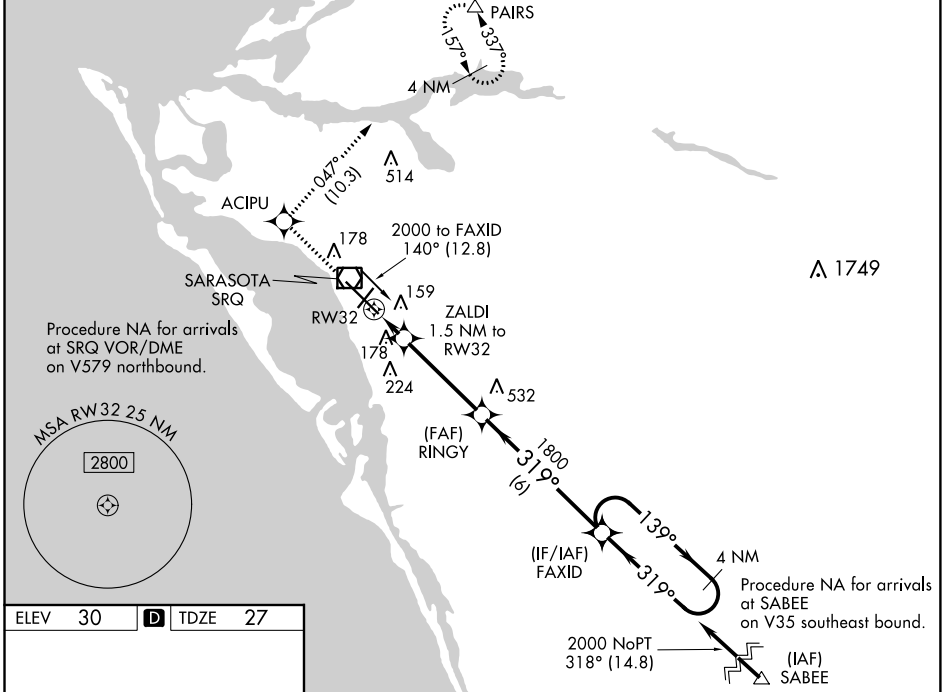


WAAS CH 72605	APP CRS 319°	Rwy Idg TDZE Apt Elev	7510 27 30
-------------------------	------------------------	-----------------------------	---------------------------------------

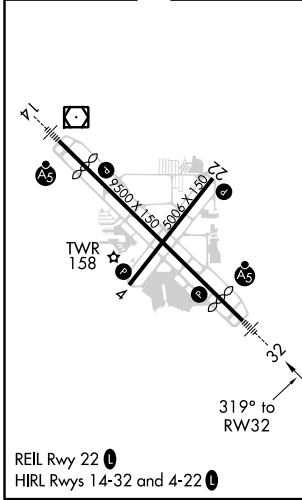
RNAV (GPS) RWY 32

SARASOTA/BRADENTON INTL (SRQ)

RNP APCH.		SARASOTA TOWER ★		GND CON	CLNC DEL	UNICOM
▼ For uncompensated Baro-VNAV systems, LNAV/VNAV NA below -15°C or above 43°C. When control tower closed, LPV and LNAV/VNAV NA; increase LNAV all Cats visibility to 1 mile. When control tower closed, inop table does not apply to LNAV Cats A and B. When control tower closed, for inop MALSRS, increase LNAV Cat C and D visibility to 1½ mile.		120.1 (CTAF) 0 256.8		121.9 273.6	118.25	122.95



ELEV 30	D	TDZE 27
---------	----------	---------



3000	ACIPU	tr 047°	PAIRS	FAXID	4 NM Holding Pattern
*LNAV only.		ZALDI 1.5 NM to RW32	RINGY 1800	139° → 2000	GP 3.00° TCH 53
RW32		540*	1800	← 319°	
1.5 NM		3.9 NM	6 NM		
CATEGORY	A	B	C	D	
LPV DA	227-½		200 (200-½)		
LNAV/DA VNAV	463-1		436 (500-1)		
LNAV MDA	440-½	413 (500-½)	440-¾	413 (500-¾)	
CIRCLING	500-1	470 (500-1)	600-1½	570 (600-1½)	600-2
			570 (600-2)		

SE-3, 19 MAY 2022 to 16 JUN 2022

SE-3, 19 MAY 2022 to 16 JUN 2022