

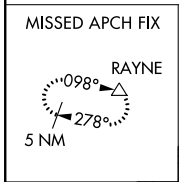
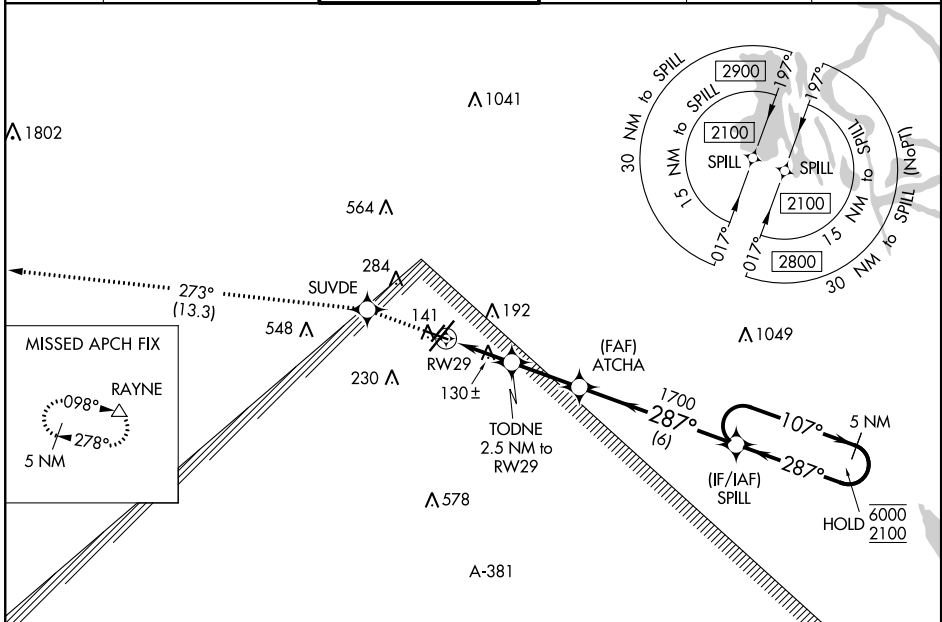
WAAS CH 45703 W29A	APP CRS 287°	Rwy ldg 5150 TDZE 42 Apt Elev 42
--	------------------------	---

RNAV (GPS) RWY 29

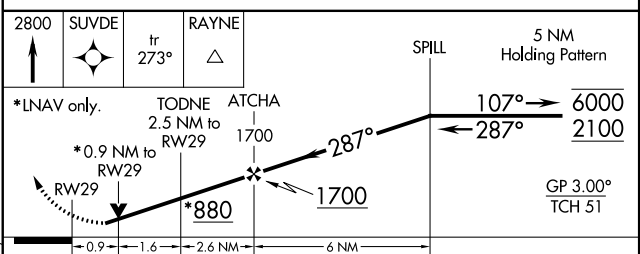
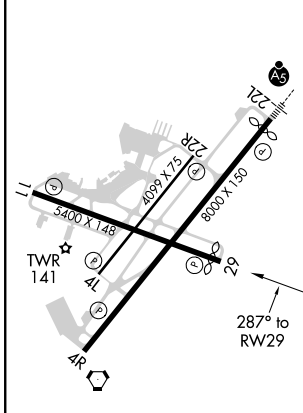
LAFAYETTE RGNL/PAUL FOURNET FLD (L.F.T.)

RNP APCH.		MISSED APPROACH: Climb to 2800 direct SUVDE and on track 273° to RAYNE and hold.			
Rwy 29 helicopter visibility reduction below 3/4 SM NA. For uncompensated Baro-VNAV systems, LNAV/VNAV NA below -2°C or above 54°C.					

ATIS 134.05	LAFAYETTE APP CON ★ 121.1 363.0	LAFAYETTE TOWER ★ 118.5 (CTAF) 0 257.8	GND CON 121.8	CLNC DEL 125.55	UNICOM 122.95
-----------------------	---	--	-------------------------	---------------------------	-------------------------



ELEV 42	D	TDZE 42
---------	----------	---------



CATEGORY	A	B	C	D
LPV DA		292-3/4	250 (300-3/4)	
LNAV/VNAV DA		292-3/4	250 (300-3/4)	
LNAV MDA		380-1	338 (400-1)	
C CIRCLING	500-1	580-1	700-1 3/4	700-2
	458 (500-1)	538 (600-1)	658 (700-1 3/4)	658 (700-2)

REIL Rws 4L, 4R, 11, 22R and 29
MIRL Rwy 11-29 and 4L-22R
HIRL Rwy 4R-22L

SC-4, 19 MAY 2022 to 16 JUN 2022

SC-4, 19 MAY 2022 to 16 JUN 2022