

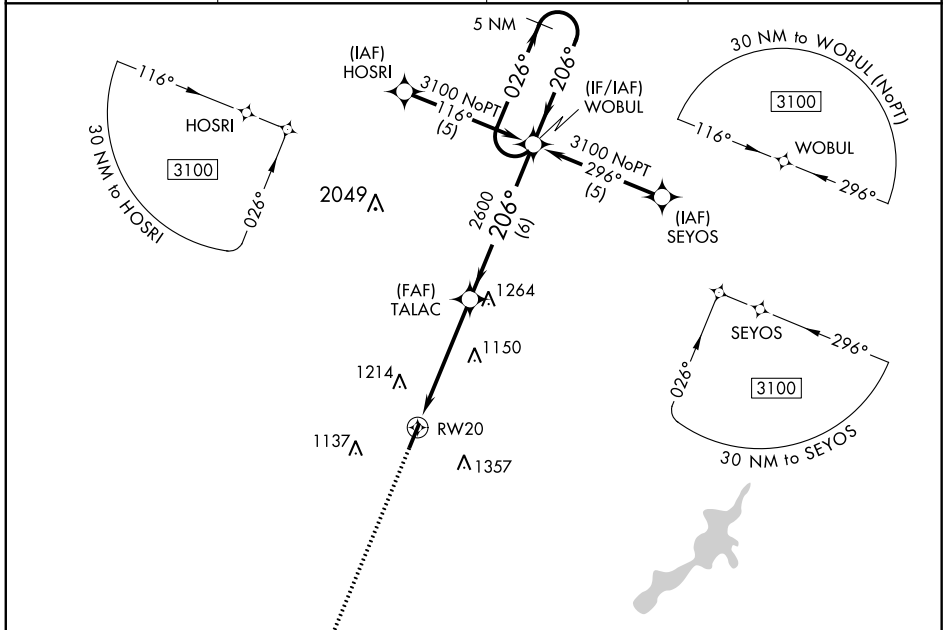
WAAS CH 93601 W20A	APP CRS 206°	Rwy Idg TDZE 955 Apt Elev 957	4410 955 957
--	------------------------	---	---

RNAV (GPS) RWY 20

DAYTON-WRIGHT BROTHERS (MGY)

RNP APCH.		MALS	MISSED APPROACH: Climb to 3100 direct SOVVO and hold.
<p>▼ Inoperative table does not apply. When local altimeter setting not received, use James M Cox Dayton Intl altimeter setting and increase all DAs/MDAs 60 feet and Circling Cat C/D visibility ¼ SM. Rwy 20 helicopter visibility reduction below ¾ SM NA. VDP NA when using James M Cox Dayton Intl altimeter setting.</p>			

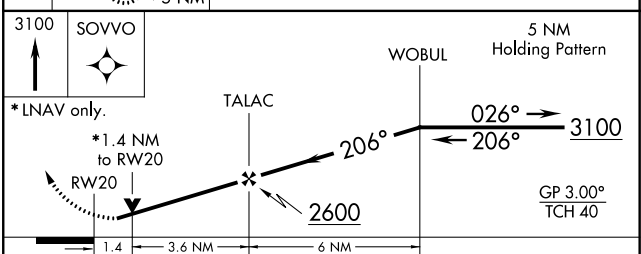
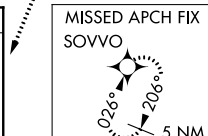
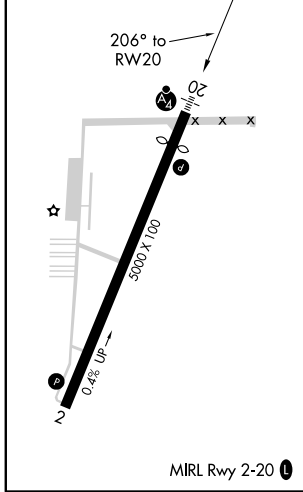
ASOS 118.375	COLUMBUS APP CON 118.85 269.275	CLNC DEL 119.4	UNICOM 122.8 (CTAF)
------------------------	---	--------------------------	-------------------------------



EC-2, 19 MAY 2022 to 16 JUN 2022

EC-2, 19 MAY 2022 to 16 JUN 2022

ELEV 957	D	TDZE 955
----------	----------	----------



CATEGORY	A	B	C	D
LPV DA	1294-1¼ 339 (400-1¼)			
LNAV MDA	1440-1	485 (500-1)	1440-1½ 485 (500-1½)	1440-1½ 485 (500-1½)
C CIRCLING	1480-1¼ 523 (600-1¼)	1520-1¼ 563 (600-1¼)	1660-2 703 (800-2)	1660-2¼ 703 (800-2¼)