


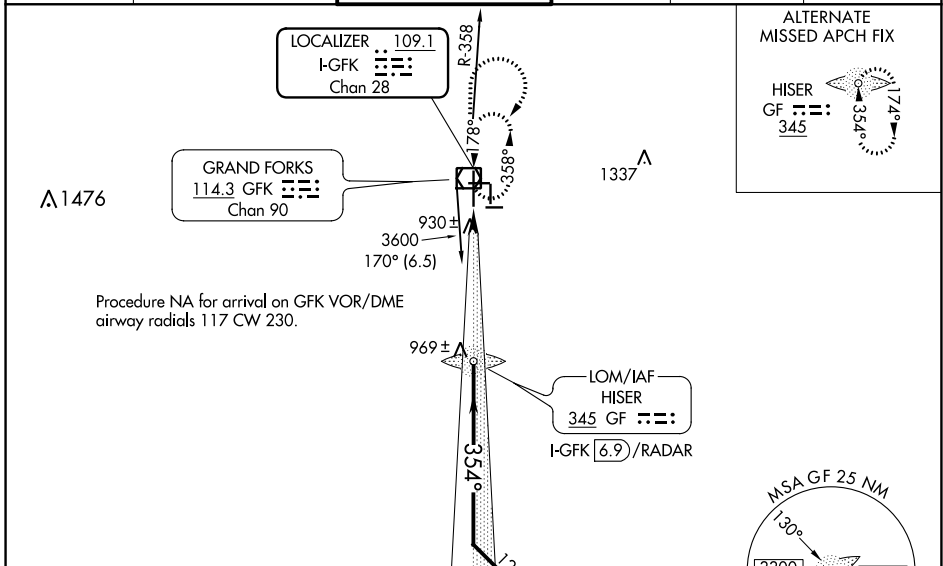
LOC/DME I-GFK 109.1 Chan 28	APP CRS 354°	Rwy Idg 7351 TDZE 845 Apt Elev 845
--	------------------------	---

ILS or LOC RWY 35L

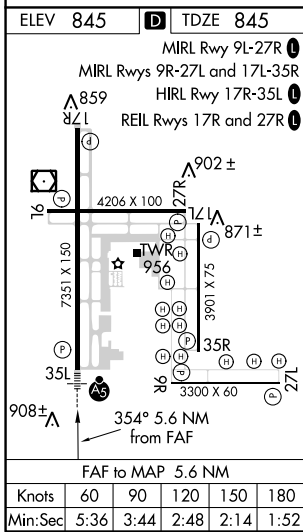
GRAND FORKS INTL (GFK)

ADF or DME or RADAR REQUIRED.		 MISSED APPROACH: Climb to 3600 then right turn direct GFK VOR/DME and hold.
VDP NA with Crookston altimeter setting. When local altimeter setting not received, use Crookston altimeter setting and increase DA to 1107 feet and all MDA 80 feet; increase S-LOC 35L Cats C/D/E visibility to RVR 4000 and Circling Cats C and E visibility ¼ SM. For inop ALS, increase S-ILS 35L Cat E visibility to RVR 4000 and S-LOC 35L Cat E visibility to RVR 5000. For inop ALS when using Crookston altimeter setting, increase S-ILS 35L all Cats visibility to RVR 4500 and S-LOC 35L Cat C/D/E visibility to RVR 6000. Procedure turn NA for Cat E aircraft, Radar required.		

ATIS 119.4	GRAND FORKS APP CON * 118.1 318.1	GRAND FORKS TOWER* 118.4 (CTAF) 350.35	GND CON 124,575	CLNC DEL 135,725	UNICOM 122.95
----------------------	---	---	---------------------------	----------------------------	-------------------------



Procedure NA for arrival on GFK VOR/DME
airway radials 117 CW 230.



3600 * LOC only. * I-GFK 2.3 I-GFK 1.4 0.9 NM 4.6 NM 2536 174° 354° 2600 2600 GS 2.76° TCH 61	GF HISER LOM I-GFK 6.9/RADAR Remain within 10 NM				
	CATEGORY A B C D E	S-ILS 35L 1045/24 200 (200-½)			
S-LOC 35L 1180/24 335 (400-½) 1180/26 335 (400-½)		CIRCLING 1260-1 1300-1 1400-1½ 1400-2 1520-2½ 415 (500-1) 455 (500-1) 555 (600-1½) 555 (600-2) 675 (700-2½)			

NC-1, 19 MAY 2022 to 16 JUN 2022

NC-1, 19 MAY 2022 to 16 JUN 2022