

WAAS CH <b>63199</b> <b>W17A</b>	APP CRS <b>174°</b>	Rwy Idg TDZE Apt Elev	<b>7351</b> <b>843</b> <b>845</b>
--	------------------------	-----------------------------	---

# RNAV (GPS) RWY 17R

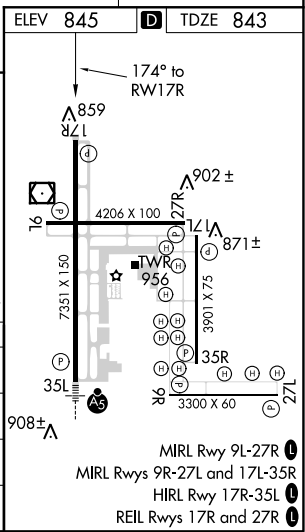
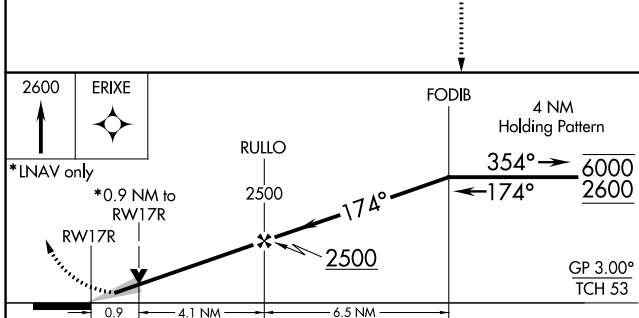
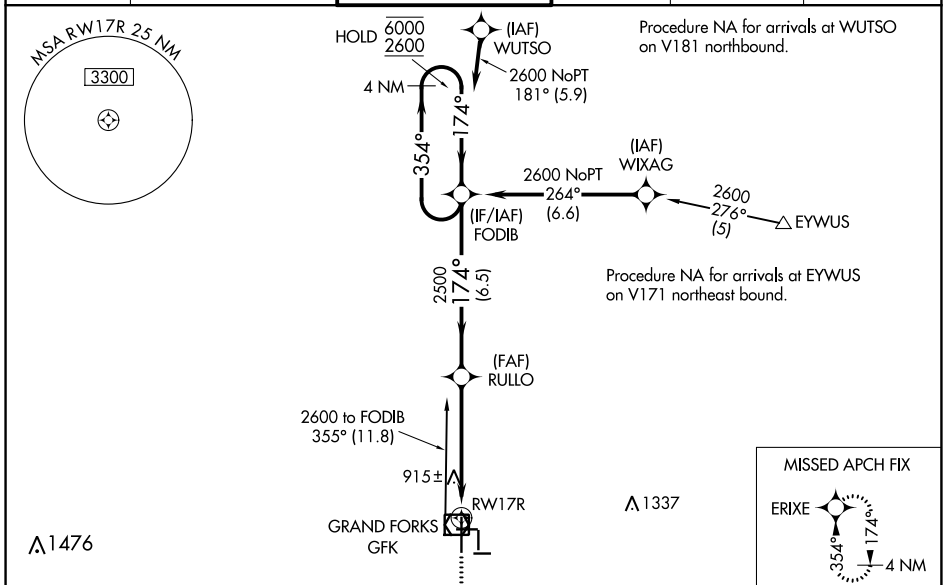
GRAND FORKS INTL (GFK)

RNP APCH.

Baro-VNAV NA when using Crookston altimeter setting. For uncompensated Baro-VNAV systems, LNAV/VNAV NA below -20°C or above 54°C. VDP NA with Crookston altimeter setting. When local altimeter setting not received, use Crookston altimeter setting and increase all DA 62 feet and all MDA 80 feet and increase LPV and LNAV/VNAV all Cats visibility 1/8 SM, LNAV Cats C/D visibility 1/8 SM, and Circling Cat C visibility 1/4 SM.

MISSED APPROACH: Climb to 2600 direct ERIXE and hold.

ATIS <b>119.4</b>	GRAND FORKS APP CON* <b>118.1 318.1</b>	GRAND FORKS TOWER* <b>118.4(CTAF) 350.35</b>	GND CON <b>124.575</b>	CLNC DEL <b>135.725</b>	UNICOM <b>122.95</b>
----------------------	--	---	---------------------------	----------------------------	-------------------------



CATEGORY	A	B	C	D
LPV DA		1043-3/4	200 (200-3/4)	
LNAV/VNAV DA		1093-3/4	250 (300-3/4)	
LNAV MDA		1180-1	337 (400-1)	
CIRCLING	1260-1 415 (500-1)	1300-1 455 (500-1)	1400-1 1/2 555 (600-1 1/2)	1400-2 555 (600-2)

NC-1, 19 MAY 2022 to 16 JUN 2022

NC-1, 19 MAY 2022 to 16 JUN 2022