

WAAS CH 58104 W09A	APP CRS 084°	Rwy Idg TDZE Apt Elev	4206 843 845
--	------------------------	-----------------------------	---

RNAV (GPS) RWY 9L

GRAND FORKS INTL (GFK)

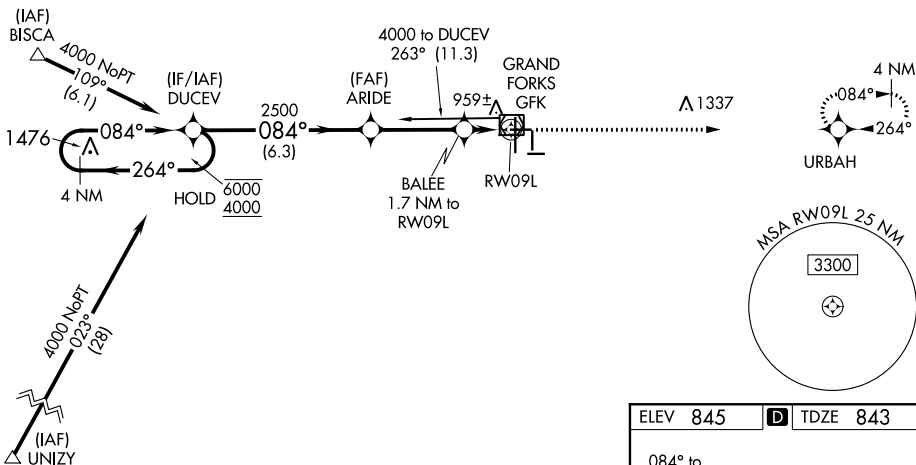
RNP APCH.

▼ Baro-VNAV and VDP NA when using Crookston altimeter setting.
 ▲ For uncompensated Baro-VNAV systems, LNAV/VNAV NA below -16°C or above 54°C. When local altimeter setting not received, use Crookston altimeter setting and increase all DA 62 feet and all MDA 80 feet, increase LNAV Cat C visibility 3/8 SM, Cat D visibility 1/8 SM and Circling Cat C 1/4 SM.

MISSED APPROACH: Climb to 2800 direct URBAH and hold.

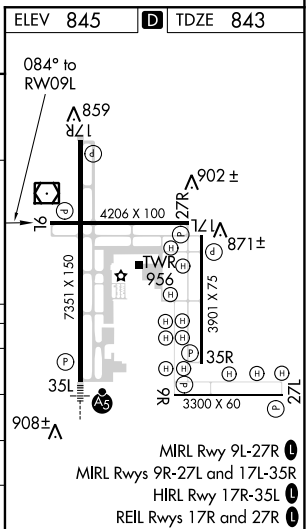
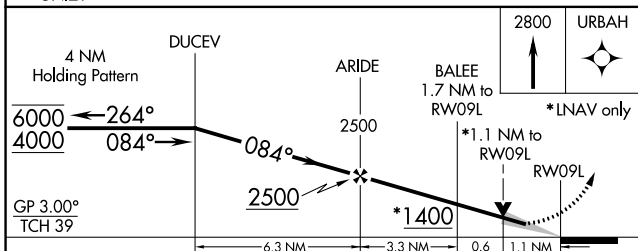
ATIS 119.4	GRAND FORKS APP CON * 118.1 318.1	GRAND FORKS TOWER * 118.4 (CTAF) 0 350.35	GND CON 124.575	CLNC DEL 135.725	UNICOM 122.95
----------------------	---	---	---------------------------	----------------------------	-------------------------

Procedure NA for arrivals at GFK VOR/DME on V55 northeast bound.



NC-1, 19 MAY 2022 to 16 JUN 2022

NC-1, 19 MAY 2022 to 16 JUN 2022



CATEGORY	A	B	C	D
LPV DA	1093-1		250 (300-1)	
LNAV/VNAV DA	1238-1½		395 (400-1½)	
LNAV MDA	1220-1		377 (400-1)	
			1220-1¼ 377 (400-1¼)	
CIRCLING	1260-1	1300-1	1400-1½	1400-2
	415 (500-1)	455 (500-1)	555 (600-1½)	555 (600-2)

MIRL Rwy 9L-27R
 MIRL Rwys 9R-27L and 17L-35R
 HIRL Rwy 17R-35L
 REIL Rwys 17R and 27R