

VOR/DME GFK	APP CRS	Rwy Idg	7351
114.3	183°	TDZE	843
Chan 90		Apt Elev	845

VOR RWY 17R

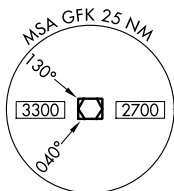
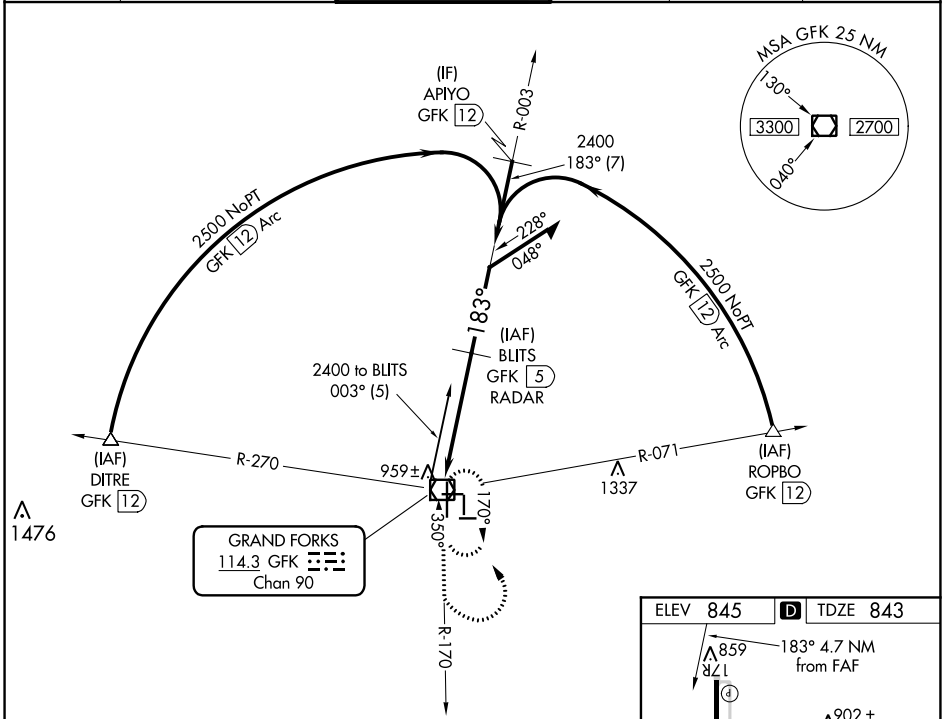
GRAND FORKS INTL (GFK)

DME or RADAR required.

▼ When local altimeter setting not received, use Crookston altimeter setting and increase all MDAs 80 feet; Increase Cat C/D visibility to 1 3/8 SM and Circling Cat C visibility 1/4 SM.
 ▲ VDP NA with Crookston altimeter setting.

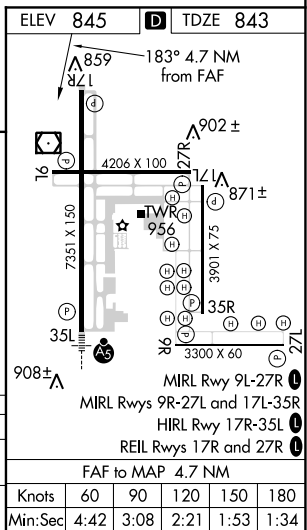
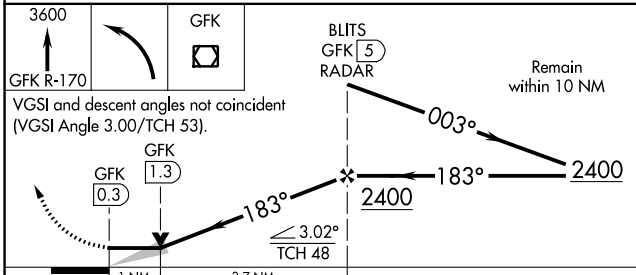
MISSED APPROACH: Climb to 3600 on GFK VOR/DME R-170 then left turn direct GFK VOR/DME and hold.

ATIS 119.4	GRAND FORKS APP CON ★ 118.1 318.1	GRAND FORKS TOWER★ 118.4(CTAF) 350.35	GND CON 124.575	CLNC DEL 135.725	UNICOM 122.95
----------------------	---	---	---------------------------	----------------------------	-------------------------



NC-1, 19 MAY 2022 to 16 JUN 2022

NC-1, 19 MAY 2022 to 16 JUN 2022



CATEGORY	A	B	C	D
S-17R	1220-1	377 (400-1)		1220-1 377 (400-1 1/4)
CIRCLING	1280-1 435 (500-1)	1300-1 455 (500-1)	1400-1 1/2 555 (600-1 1/2)	1400-2 555 (600-2)

Knots	60	90	120	150	180
Min:Sec	4:42	3:08	2:21	1:53	1:34