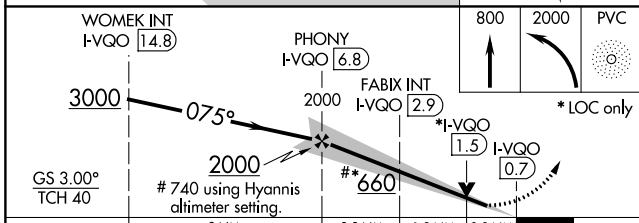
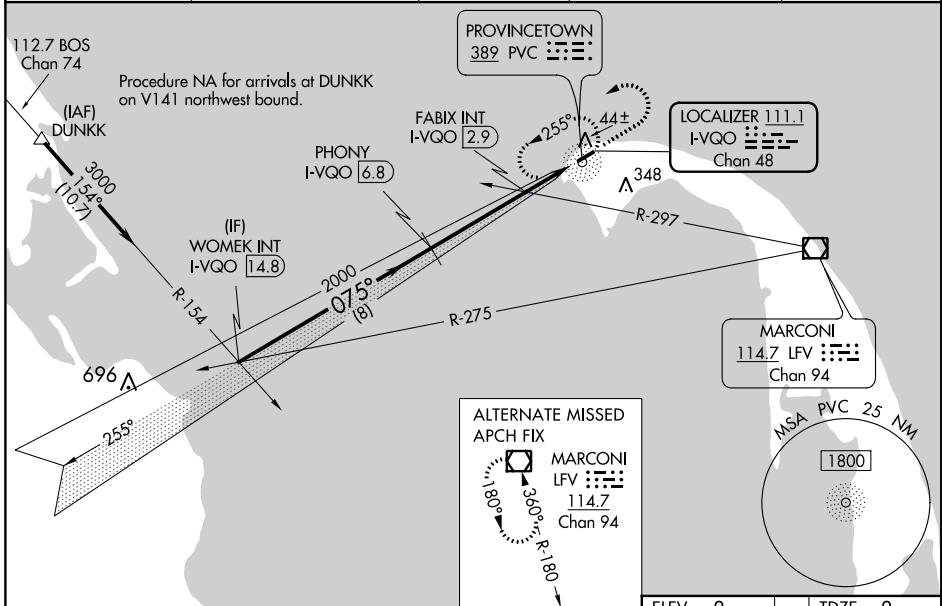


LOC/DME I-VQO 111.1 Chan 48	APP CRS 075°	Rwy Idg 3502 TDZE 8 Apt Elev 8
---	------------------------	---

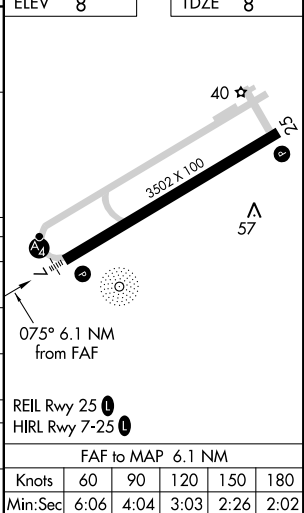
ILS or LOC RWY 7

PROVINCETOWN MUNI (PVC)

DME required for LOC only, ADF.		MALSF	MISSED APPROACH: Climb to 800 then climbing left turn to 2000 direct PVC NDB and hold, continue climb-in-hold to 2000.
AWOS-3PT 119.275	BOSTON APP CON ★ 118.2	CLNC DEL 120.65	UNICOM 122.8 (CTAF) 122.85 0



CATEGORY	A	B	C	D
S-ILS 7	208-¾	200 (200-¾)		NA
S-LOC 7	660-¾	652 (700-¾)		NA
C CIRCLING	660-1	652 (700-1)		NA
FABIX FIX MINIMUMS (DUAL VOR RECEIVERS OR DME REQUIRED)				
S-LOC 7	320-¾	312 (400-¾)		NA
C CIRCLING	460-1 452 (500-1)	660-1 652 (700-1)		NA



NE-1, 19 MAY 2022 to 16 JUN 2022

NE-1, 19 MAY 2022 to 16 JUN 2022