

WAAS CH 70521 W30A	APP CRS 302°	Rwy Idg TDZE 411 Apt Elev 413	7002
--	------------------------	---	-------------

RNAV (GPS) RWY 30L

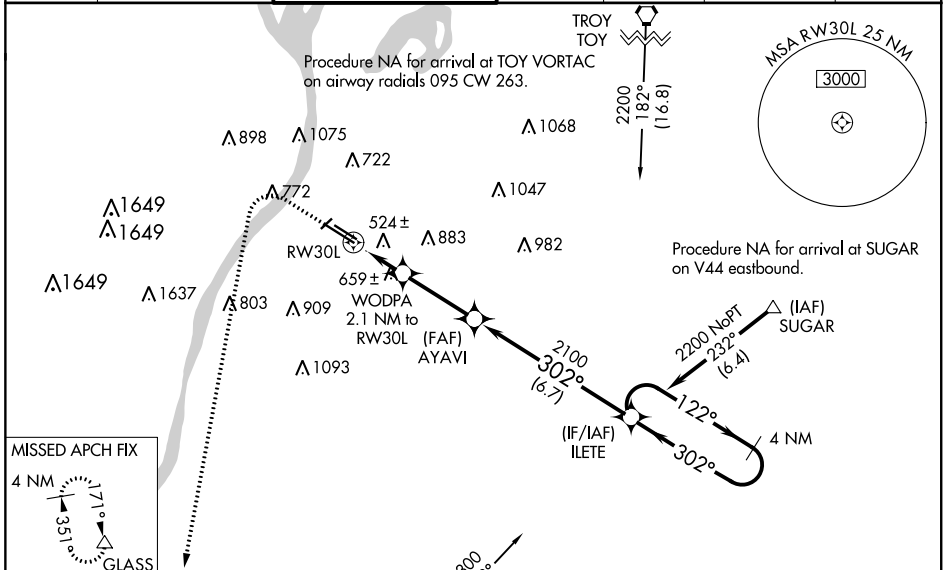
ST LOUIS DOWNTOWN (CPS)

▼ DME/DME RNP-0.3 NA. When local altimeter setting not received, use St Louis Lambert Intl altimeter setting and increase LPV DA to 674 feet, LNAV/VNAV DA to 890 feet, and all MDA 80 feet; increase LNAV/VNAV all Cats visibility $\frac{1}{4}$ SM, LNAV Cats C/D visibility $\frac{3}{8}$ SM, and Circling Cat C visibility $\frac{1}{4}$ SM. VDP and Baro-VNAV NA with St Louis Lambert Intl altimeter setting. For uncompensated Baro-VNAV systems, LNAV/VNAV NA below -1.5°C (5°F) or above 41°C (105°F). When using St Louis Lambert Intl altimeter setting; for inop MALSRL, increase LPV all Cats visibility to $\frac{1}{8}$ mile and LNAV Cats C/D visibility to $\frac{3}{8}$ mile. Night landing: Rwy 5 NA.

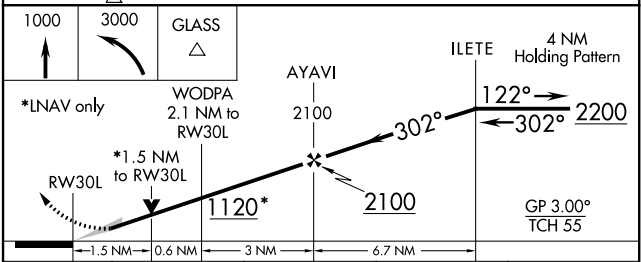
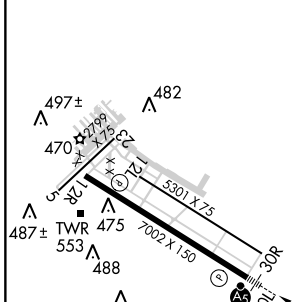


MISSED APPROACH:
Climb to 1000 then climbing left turn to 3000 direct GLASS and hold.

ATIS 121.45	ST LOUIS APP CON 123.7 371.875	DOWNTOWN TOWER * 119.925 (CTAF) 0 379.3	GND CON 121.8	CLNC DEL 118.275	CLNC DEL 121.8 (when twr closed)	UNICOM 122.95
-----------------------	--	--	-------------------------	----------------------------	---	-------------------------



ELEV 413	D	TDZE 411
----------	----------	----------



CATEGORY	A	B	C	D
LPV DA		611- $\frac{1}{2}$	200 (200- $\frac{1}{2}$)	
LNAV/VNAV DA		827- $\frac{7}{8}$	416 (500- $\frac{7}{8}$)	
LNAV MDA	940- $\frac{1}{2}$	529 (600- $\frac{1}{2}$)	940-1	529 (600-1)
CIRCLING	940-1 527 (600-1)	1120-1 707 (800-1)	1240-2 $\frac{1}{2}$ 827 (900-2 $\frac{1}{2}$)	1380-3 967 (1000-3)

EC-3, 19 MAY 2022 to 16 JUN 2022

EC-3, 19 MAY 2022 to 16 JUN 2022