

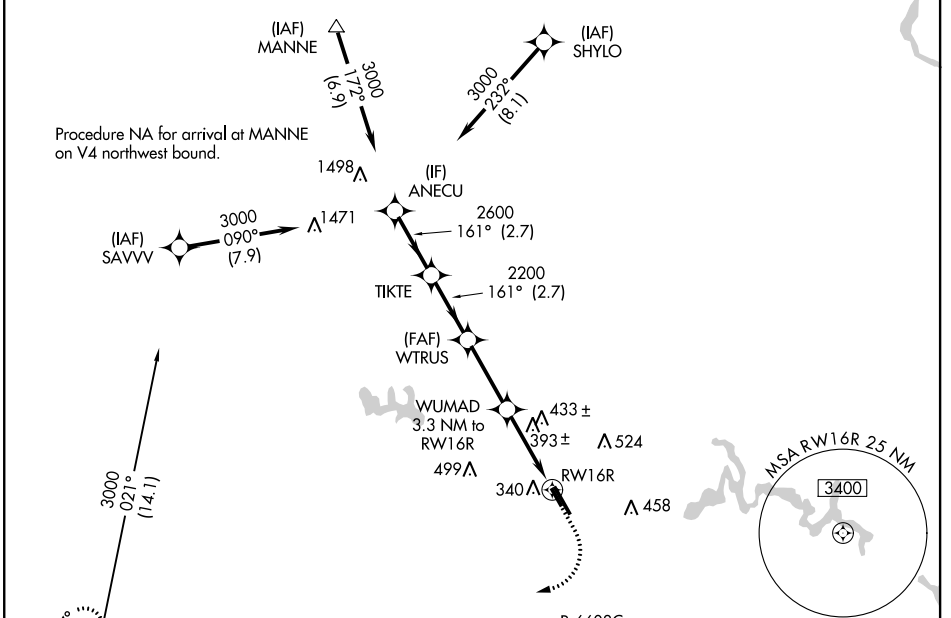
WAAS CH <b>78035</b> <b>W16B</b>	APP CRS <b>161°</b>	Rwy ldg <b>3715</b> TDZE <b>186</b> Apt Elev <b>192</b>
--	------------------------	---

# RNAV (GPS) RWY 16R

MANASSAS RGNL/HARRY P DAVIS FLD (HEF)

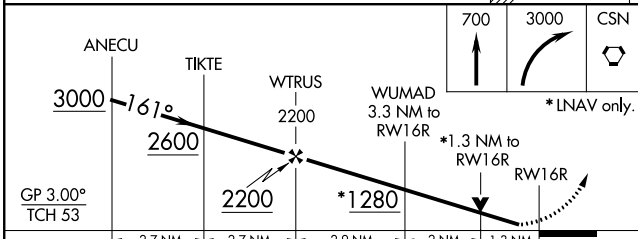
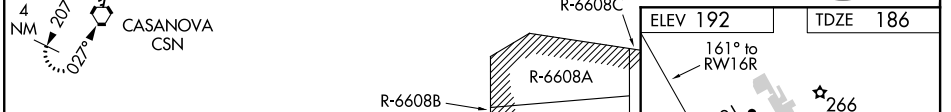
RNP APCH. RADAR required.		MISSED APPROACH: Climb to 700 then climbing right turn to 3000 direct CSN VORTAC and hold.		
<p>▼ Rwy 16R helicopter visibility reduction below 3/4 SM NA. For uncompensated Baro-VNAV systems, LNAV/VNAV NA below -15°C or above 54°C.</p>				
ATIS <b>125.175</b>	POTOMAC APP CON <b>128.525 306.925</b>	MANASSAS TOWER ★ <b>133.1 (CTAF) 0 360.75</b>	GND CON <b>121.8</b>	CLNC DEL <b>120.2</b>

• 1940



NE-3, 19 MAY 2022 to 16 JUN 2022

NE-3, 19 MAY 2022 to 16 JUN 2022



CATEGORY	A	B	C	D
LPV DA	494-1		308 (400-1)	
LNAV/VNAV DA	675-1 5/8		489 (500-1 5/8)	
LNAV MDA	660-1	474 (500-1)	660-1 3/8	474 (500-1 3/8)
CIRCLING	720-1 528 (600-1)	740-1 548 (600-1)	840-1 3/4 648 (700-1 3/4)	880-2 1/4 688 (700-2 1/4)

