

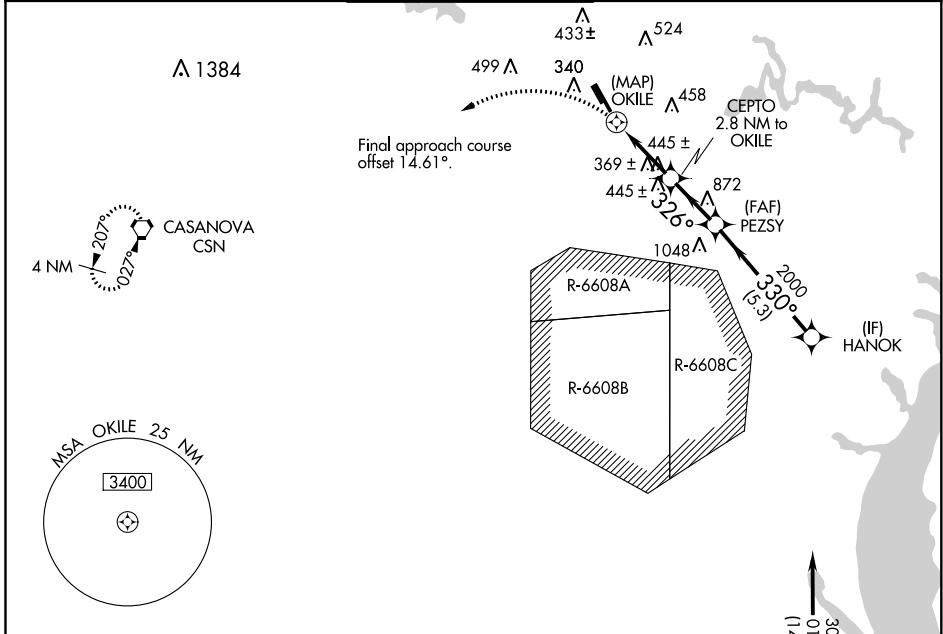
WAAS CH 63130 W34A	APP CRS 326°	Rwy Idg TDZE Apt Elev	6200 178 192
--	------------------------	-----------------------------	---

RNAV (GPS) RWY 34R

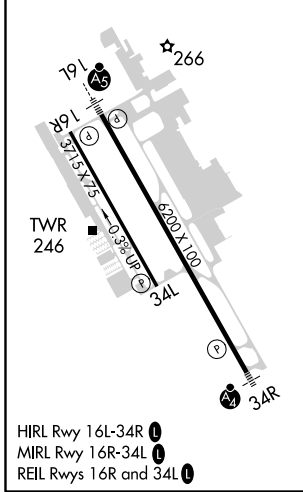
MANASSAS RGNL/HARRY P DAVIS FLD (HEF)

RNP APCH.	MALSF	MISSED APPROACH: Climbing left turn to 3000 direct CSN VORTAC and hold.
▼ Rwy 34R helicopter visibility reduction below 3/4 SM NA. For inop ALS, increase LP and LNAV Cats C/D visibility to 1 3/8 SM.		

ATIS 125.175	POTOMAC APP CON 128.525 306.925	MANASSAS TOWER ★ 133.1 (CTAF) 0 360.75	GND CON 121.8	CLNC DEL 120.2
------------------------	---	--	-------------------------	--------------------------



ELEV 192	TDZE 178
----------	----------



3000 CSN	HANOK		
OKILE	CEPTO 2.8 NM to OKILE	PEZSY	3000
1 NM to OKILE	1260	326°	330°
0.5	1 NM	1.8 NM	5.3 NM
CATEGORY	A	B	C
LP MDA	620-1 442 (500-1)		
LNAV MDA	640-1 462 (500-1)	640-1 1/8	462 (500-1 1/8)
CIRCLING	700-1 508 (600-1)	740-1 548 (600-1)	840-1 3/4 920-2 1/4
			648 (700-1 3/4) 728 (800-2 1/4)

NE-3, 19 MAY 2022 to 16 JUN 2022

NE-3, 19 MAY 2022 to 16 JUN 2022