

JACKSONVILLE INTL 

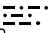
JACKSONVILLE APP CON
 127.775 379.9
 CRG ATIS
 125.4
 JAX D-ATIS
 125.85
 KNIP ATIS
 290.425
 KNRB ATIS *
 236.775
 VQG ATIS
 125.275

MAYPORT NS
(ADM DAVID L MCDONALD FLD) 

JACKSONVILLE EXEC
AT CRAIG 

JACKSONVILLE NAS
(TOWERS FLD) 


CECIL 

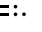
CRAIG
 114.5 CRG 
 Chan 92
 N30°20.33' - W81°30.60'

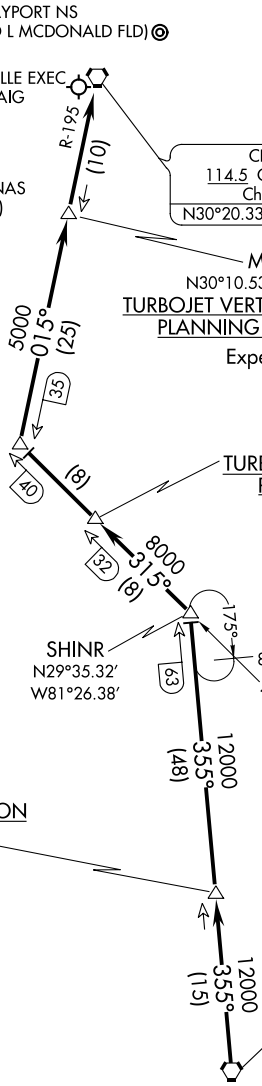
MOSEL
 N30°10.53' - W81°33.00'
TURBOJET VERTICAL NAVIGATION
PLANNING INFORMATION
 Expect 5000

BASS
 N29°40.84' - W81°32.74'
TURBOJET VERTICAL NAVIGATION
PLANNING INFORMATION
 Expect 13000 250K

CROPY
 N28°47.55' - W81°21.59'
TURBOJET VERTICAL NAVIGATION
PLANNING INFORMATION
 Expect FL270

ORMOND BEACH
 112.6 OMN 
 Chan 73

ORLANDO
 112.2 ORL 
 Chan 59
 N28°32.56' - W81°20.10'
 L-21-23-24, H-8



NOTE: RADAR required.
 NOTE: DME required.
 NOTE: Chart not to scale.

ARRIVAL ROUTE DESCRIPTION

From over ORL VORTAC on ORL R-355 to SHINR, then on OMN R-315 to POGIE, then on CRG R-195 to CRG VORTAC. Expect RADAR vectors to final approach course after CRG VORTAC.