

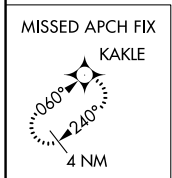
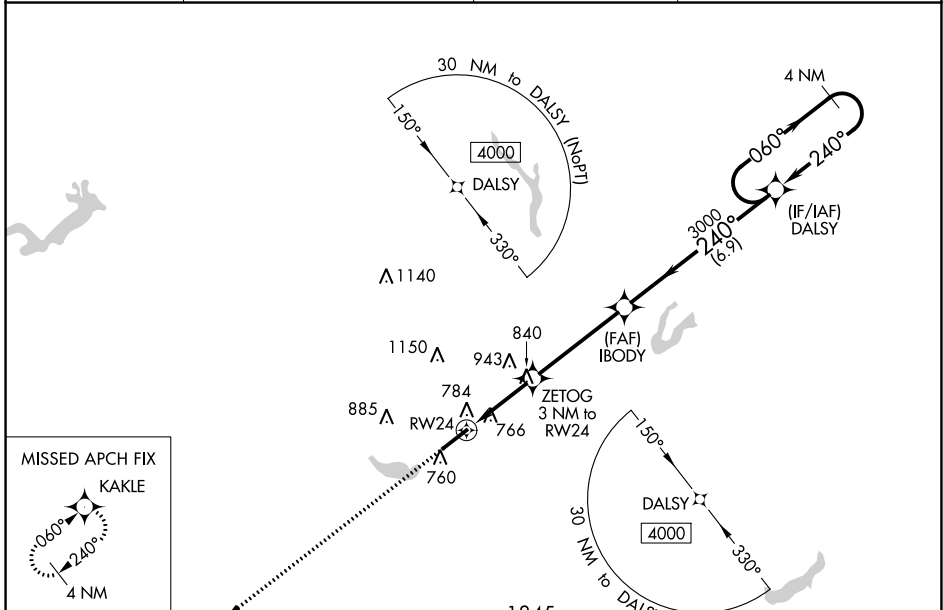
WAAS CH 48836 W24A	APP CRS 240°	Rwy Idg TDZE Apt Elev	6406 597 616
--	------------------------	-----------------------------	---

RNAV (GPS) RWY 24
BURLINGTON/ALAMANCE RGNL (BUY)

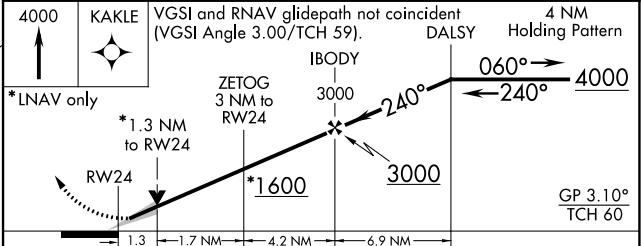
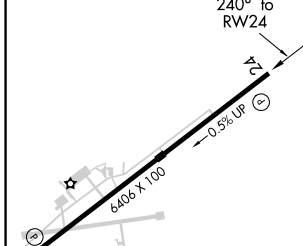
⚠ For uncompensated Baro-VNAV systems, LNAV/VNAV NA below -12°C (11°F) or above 54°C (130°F). DME/DME RNP-0.3 NA. When local altimeter setting not received, use Greensboro altimeter setting and increase all DA 97 feet and all MDA 100 feet. Increase LPV, LNAV/VNAV, LNAV Cats C/D and Circling Cat C visibility ¼ mile. Baro-VNAV and VDP NA when using Greensboro altimeter setting. Helicopter visibility reduction below ¾ SM NA.

MISSED APPROACH:
Climb to 4000 direct
KAKLE and hold.

ASOS 135.325	GREENSBORO APP CON 126.6 327.075	CLNC DEL 120.25	UNICOM 122.975 (CTAF) 0
------------------------	--	---------------------------	--



ELEV 616	TDZE 597
----------	----------



CATEGORY	A	B	C	D
LPV DA		987-1¼	390 (400-1¼)	
LNAV/VNAV DA		1056-1½	459 (500-1½)	
LNAV MDA	1060-1	463 (500-1)	1060-1¾	463 (500-1¾)
C CIRCLING	1100-1	484 (500-1)	1520-2¾ 904 (1000-2¾)	1520-3 904 (1000-3)

SE-2, 19 MAY 2022 to 16 JUN 2022

SE-2, 19 MAY 2022 to 16 JUN 2022