

FREMONT, NEBRASKA

AL-5759 (FAA)

21280

WAAS CH <b>77635</b> <b>W32A</b>	APP CRS <b>318°</b>	Rwy Idg <b>4650</b> TDZE <b>1204</b> Apt Elev <b>1204</b>
--	------------------------	---

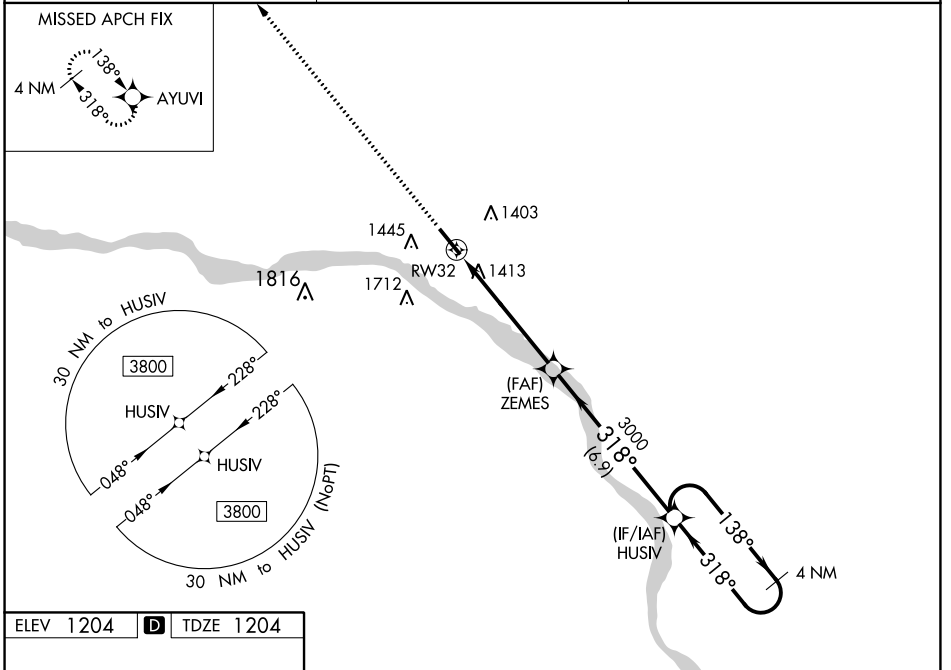
# RNAV (GPS) RWY 32

FREMONT MUNI (F'E/T)

**⚠** For uncompensated Baro-VNAV systems, LNAV/VNAV NA below -17°C (2°F) or above 54°C (130°F).  
**⚠** DME/DME RNP-0.3 NA. Helicopter visibility reduction below 1 SM NA. When local altimeter setting not received, use Blair altimeter setting and increase all DA/MDA 60 feet; increase LNAV Cat C visibility ½ mile, and LNAV/VNAV visibility ¼ mile all Cats. Baro-VNAV and VDP NA when using Blair altimeter setting.

MISSED APPROACH: Climb to 3300 direct AYUVI and hold.

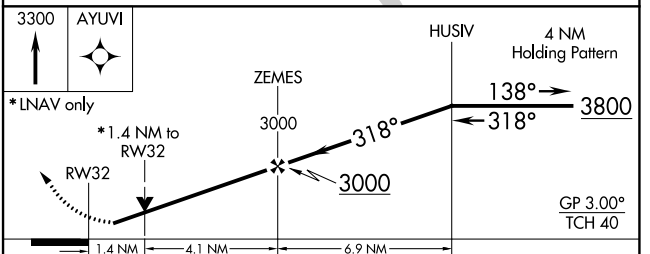
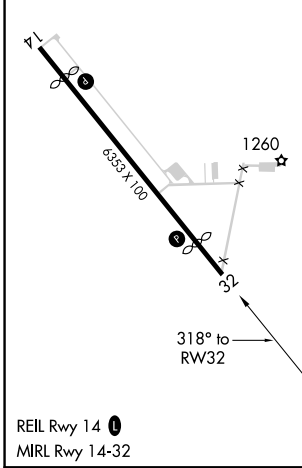
AWOS-3 <b>121.275</b>	OMAHA APP CON <b>120.1 354.05</b>	UNICOM <b>122.8 (CTAF) ①</b>
--------------------------	--------------------------------------	---------------------------------



NC-2, 19 MAY 2022 to 16 JUN 2022

NC-2, 19 MAY 2022 to 16 JUN 2022

ELEV <b>1204</b>	<b>D</b>	TDZE <b>1204</b>
------------------	----------	------------------



CATEGORY	A	B	C	D
LPV DA	1456-1 252 (300-1)			NA
LNAV/VNAV DA	1712-1¾ 508 (600-1¾)			NA
LNAV MDA	1680-1	476 (500-1)	1680-1⅜ 476 (500-1⅜)	NA
<b>C</b> CIRCLING	1760-1	556 (600-1)	2020-2½ 816 (900-2½)	NA

FREMONT, NEBRASKA  
 Orig-B 29MAR18

41°27'N-96°31'W

# FREMONT MUNI (F'E/T)

## RNAV (GPS) RWY 32