

VOR/DME SCB	APP CRS	Rwy Idg	4650
111.0	147°	TDZE	1204
Chan 47		Apt Elev	1204

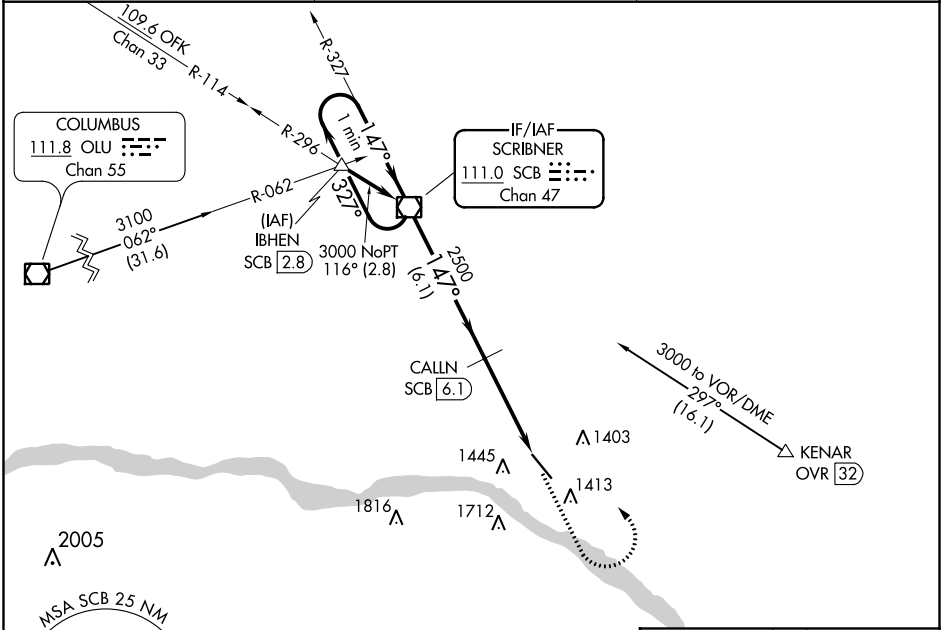
VOR RWY 14

FREMONT MUNI (F'ET)

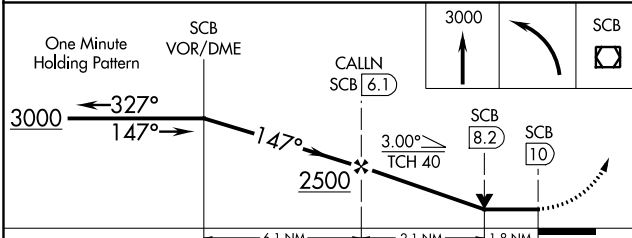
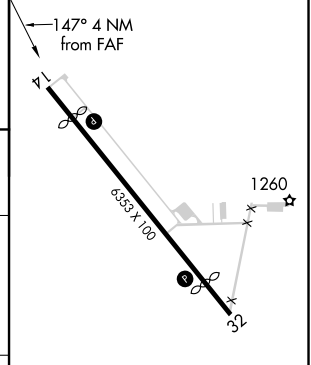
V VDP NA with Blair altimeter setting. Rwy 14 helicopter visibility reduction below 1 SM NA. When local altimeter setting not received, use Blair altimeter setting and increase all MDA 60 feet; increase S-14 Cat C visibility 1/8 mile. DME required.

NA MISSED APPROACH: Climb to 3000 then left turn direct SCB VOR/DME and hold.

AWOS-3 121.275	OMAHA APP CON 120.1 354.05	UNICOM 122.8 (CTAF) 0
--------------------------	--------------------------------------	---------------------------------



ELEV 1204	D TDZE 1204
-----------	--------------------



CATEGORY	A	B	C	D
S-14	1820-1	616 (700-1)	1820-1 3/4 616 (700-1 3/4)	NA
C CIRCLING	1820-1	616 (700-1)	2020-2 1/2 816 (900-2 1/2)	NA

REIL Rwy 14 **0**
MIRL Rwy 14-32

NC-2, 19 MAY 2022 to 16 JUN 2022

NC-2, 19 MAY 2022 to 16 JUN 2022