

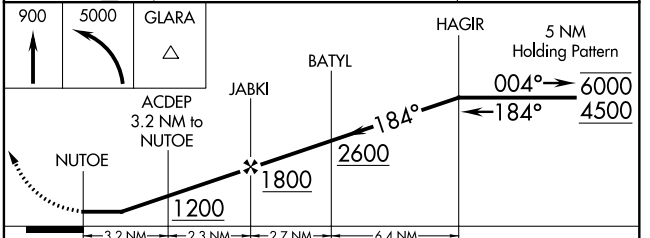
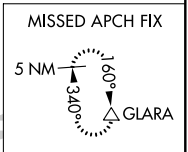
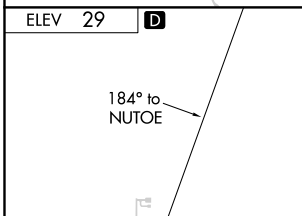
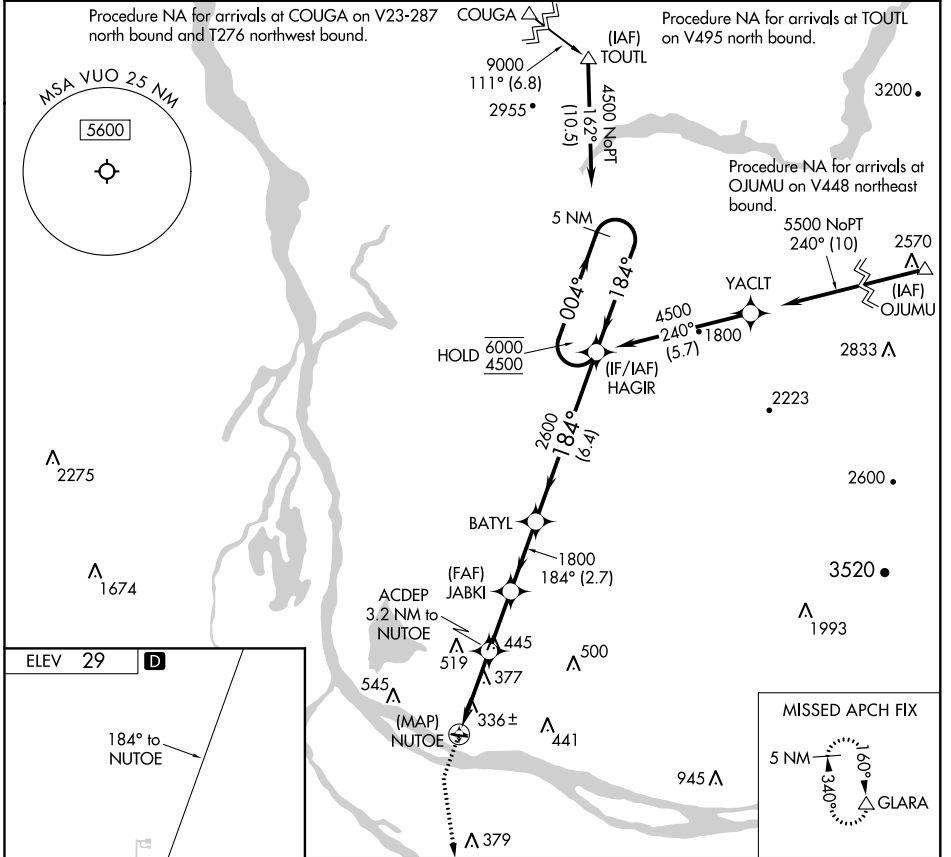
APP CRS	Rwy Idg	N/A
<b>184°</b>	TDZE	N/A
	Apt Elev	<b>29</b>

# RNAV (GPS)-B

PEARSON FLD (VUO)

RNP APCH - GPS.	MISSED APPROACH: Climb to 900 then climbing left turn to 5000 direct GLARA and hold, continue climb-in-hold to 5000.
<p><b>▼</b> When local altimeter setting not received, use Portland Intl altimeter setting.</p>	

ASOS <b>135.125</b>	PORTLAND APP CON <b>124.35 360.8</b>	CLNC DEL <b>119.0 (CTAF) 0</b>
------------------------	---	-----------------------------------



REIL Rwy 26	MIRL Rwy 8-26 <b>0</b>	PEARSON FLD (VUO)
ORIG 19MAY22	45°37'N-122°39'W	RNAV (GPS)-B

NW-1, 19 MAY 2022 to 16 JUN 2022

NW-1, 19 MAY 2022 to 16 JUN 2022