

LOC/DME I-LHM 108.75 Chan 24 (Y)	APP CRS 151°	Rwy Idg TDZE Apt Elev	6001 121 121
---	------------------------	-----------------------------	---

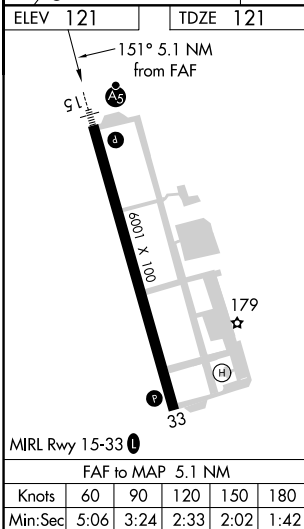
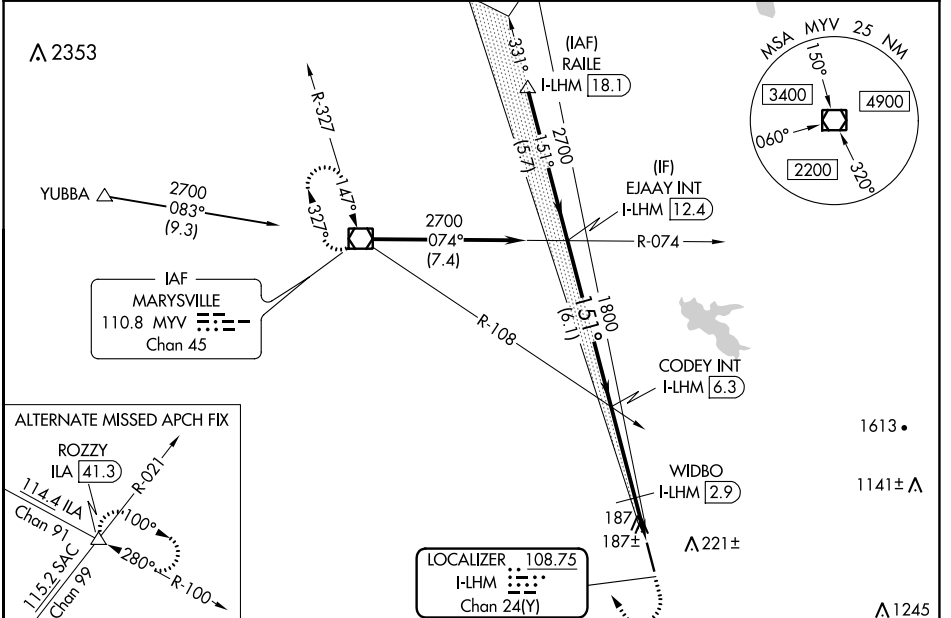
ILS or LOC RWY 15

LINCOLN RGNL/KARL HARDER FLD (LHM)

NA When local altimeter setting not received, use Beale AFB altimeter setting and increase DA to 361 feet and all MDAs 40 feet; increase S-LOC 1.5 Cat C/D and Circling Cat D visibility ¼ SM. VDP NA with Beale AFB altimeter setting. WIDBO fix minimums: for inop ALS, increase S-LOC 1.5 Cat D visibility to 1 mile.

MAISLR MISSED APPROACH: Climb to 1200 then climbing right turn to 3000 direct MYV VOR/DME and hold.

AWOS-3 124.25	NORCAL APP CON 125.4 259.1	UNICOM 123.0 (CTAF)
-------------------------	--------------------------------------	-------------------------------



EJAAY INT I-LHM (12.4)	#640 when using Beale AFB altimeter setting.		1200	3000	MYV
CODEY INT I-LHM (6.3)	2700	1800	↑	↷	◻
WIDBO I-LHM (2.9)	1800	1800	*I-LHM (2.1)	*LOC only	I-LHM (1.2)
GS 3.00° TCH 46	6.1 NM	3.4 NM	0.8 NM	0.9 NM	
CATEGORY	A	B	C	D	
S-ILS 15	321-½ 200 (200-½)				
S-LOC 15	600-½	479 (500-½)	600-¾ 479 (500-¾)	600-1 479 (500-1)	
CIRCLING	600-1	479 (500-1)	600-1½ 479 (500-1½)	760-2 639 (700-2)	
WIDBO FIX MINIMUMS					
S-LOC 15	460-½ 339 (400-½)		460-¾ 339 (400-¾)		
CIRCLING	520-1 399 (400-1)	580-1 459 (500-1)	600-1½ 479 (500-1½)	760-2 639 (700-2)	

SW-2, 19 MAY 2022 to 16 JUN 2022

SW-2, 19 MAY 2022 to 16 JUN 2022