

APP CRS	Rwy Idg	6001
331°	TDZE	121
	Apt Elev	121

RNAV (GPS) RWY 33

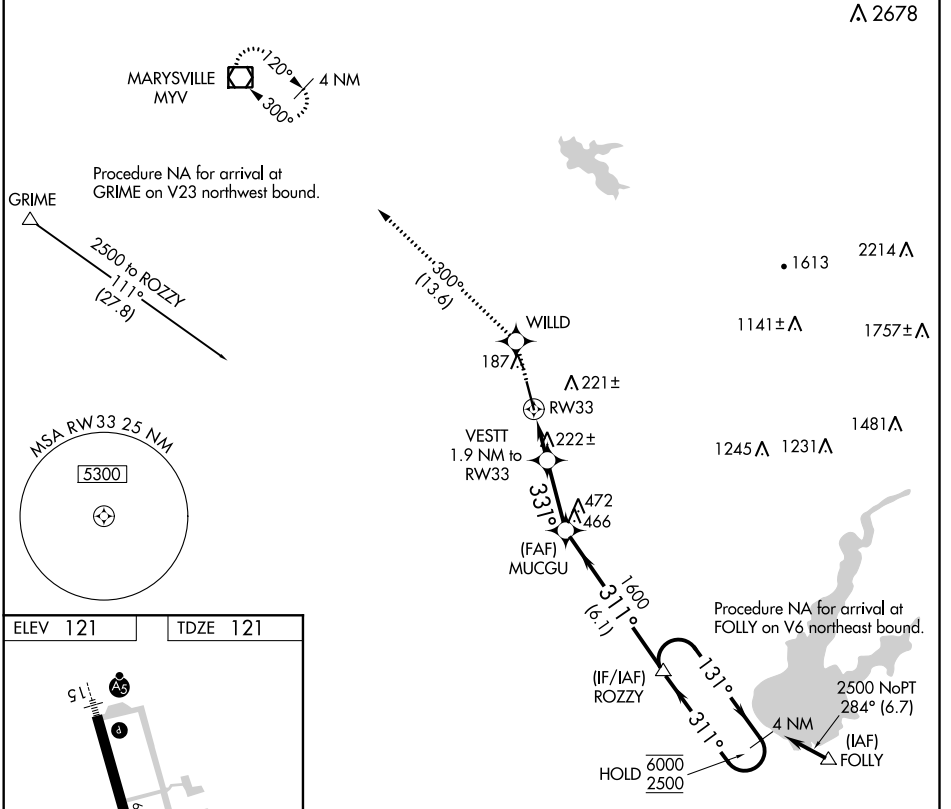
LINCOLN RGNL/KARL HARDER FLD (LHM)

RNP APCH.

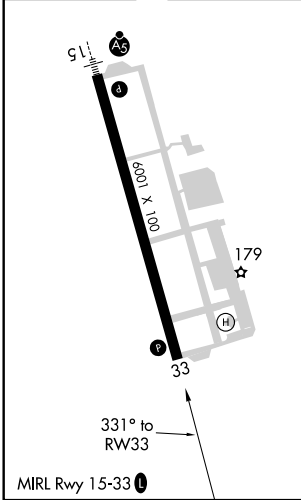
⚠ Rwy 33 helicopter visibility reduction below 3/4 SM NA. When local altimeter setting not received, use Beale AFB altimeter setting and increase all MDA 40 feet, and increase LNAV Cat C/D visibility 1/8 mile. VDP NA with Beale AFB altimeter setting.

MISSED APPROACH: Climb to 2000 direct WILLD and on track 300° to MYV VOR/DME and hold.

AWOS-3 124.25	NORCAL APP CON 125.4 259.1	UNICOM 123.0 (CTAF) 0
-------------------------	--------------------------------------	---------------------------------



ELEV	121	TDZE	121
------	-----	------	-----



2000	WILLD	tr 300°	MYV	ROZZY	4 NM Holding Pattern
		VESTT 1.9 NM to RW33	MUCCGU		
		0.9 NM to RW33			
		3.04° TCH 31			
		760	1600		
		0.9 NM	1 NM	2.6 NM	6.1 NM
CATEGORY	A	B	C	D	
LNAV MDA	480-1 359 (400-1)				

SW-2, 19 MAY 2022 to 16 JUN 2022

SW-2, 19 MAY 2022 to 16 JUN 2022