

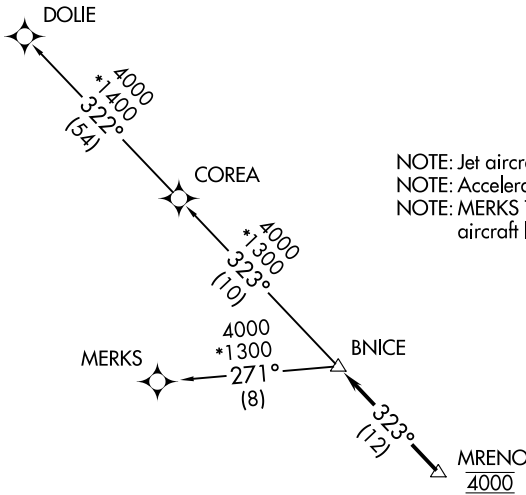
BNICE ONE DEPARTURE (RNAV)

RNAV 1 - DME/DME/IRU or GPS.

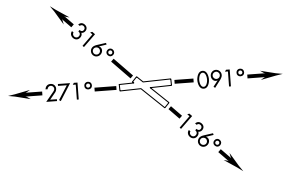
RADAR required.

**TOP ALTITUDE:
ASSIGNED BY ATC**

ATIS 119.85
 CLNC DEL 127.95
 GND CON 121.75
 EXECUTIVE TOWER 120.9 239.3
 MIAMI DEP CON 126.05 251.1



NOTE: Jet aircraft only.
 NOTE: Accelerate to 250K, if unable, advise ATC.
 NOTE: MERKS Transition ATC assigned only except aircraft landing: MKY, RSW, APF, PGD, FMY.



TAKEOFF MINIMUMS

Rwys 9, 13, 27, 31: Standard with minimum climb of 500' per NM to 520.

NOTE: Chart not to scale.



DEPARTURE ROUTE DESCRIPTION

- TAKEOFF RUNWAY 9: Climb on heading 091° or as assigned by ATC for vectors to cross MRENO at 4000, thence. . .
- TAKEOFF RUNWAY 13: Climb on heading 136° or as assigned by ATC for vectors to cross MRENO at 4000, thence. . .
- TAKEOFF RUNWAY 27: Climb on heading 271° or as assigned by ATC for vectors to cross MRENO at 4000, thence. . .
- TAKEOFF RUNWAY 31: Climb on heading 316° or as assigned by ATC for vectors to cross MRENO at 4000, thence. . .

. . . on track 323° to BNICE, then on assigned transition, maintain ATC assigned altitude, expect clearance to filed altitude within 10 minutes after departure.

COREA TRANSITION (BNICE1.COREA)

DOLIE TRANSITION (BNICE1.DOLIE)

MERKS TRANSITION (BNICE1.MERKS)

BNICE ONE DEPARTURE (RNAV)

(BNICE1.BNICE) 19MAY22